



# 2009 WaveRunner VX/VX Sport/ VX Deluxe/VX Cruiser

## OWNER'S/OPERATOR'S MANUAL

 Read this manual carefully  
before operating this watercraft.

**U.S.A. Edition**  
YAMAHA MOTOR CORPORATION, U.S.A.  
**LIT-18626-08-17**  
**F2L-F8199-10**

## **WARNING**

The engine exhaust from this product contains chemicals known to the State of California to cause cancer, birth defects or other reproductive harm.

YAMAHA

LIT-CALIF-65-01

**Read this manual carefully before operating this watercraft. This manual should stay with the WaveRunner if it is sold.**

# Important manual information

EJU30181

## To the owner/operator

Thank you for choosing a Yamaha watercraft. This owner's/operator's manual contains information you will need for proper operation, maintenance, and care. A thorough understanding of these simple instructions will help you to obtain maximum enjoyment from your new Yamaha. If you have any questions about the operation or maintenance of your watercraft, please consult a Yamaha dealer. Because Yamaha has a policy of continuing product improvement, this product may not be exactly as described in this owner's/operator's manual. Specifications are subject to change without notice.

This manual should be considered a permanent part of this watercraft and should remain with it even if the watercraft is subsequently sold.

In this manual, information of particular importance is distinguished in the following ways:



The Safety Alert Symbol means ATTENTION! BECOME ALERT! YOUR SAFETY IS INVOLVED!

EWJ00071



### **WARNING**

**A WARNING indicates a hazardous situation which, if not avoided, could result in death or serious injury.**

ECJ00091



### **NOTICE**

**A NOTICE indicates special precautions that must be taken to avoid damage to the watercraft or other property.**

### **TIP:**

A TIP provides key information to make procedures easier or clearer.

EJU30221

**WaveRunner VX/VX Sport/  
VX Deluxe/VX Cruiser  
OWNER'S/OPERATOR'S MANUAL  
©2008 by Yamaha Motor Corporation,  
U.S.A.**

**1st Edition, May 2008**

**All rights reserved.**

**Any reprinting or unauthorized use  
without the written permission of  
Yamaha Motor Corporation, U.S.A.  
is expressly prohibited.**

**Printed in U.S.A.**

**P/N LIT-18626-08-17**

# Table of contents

---

## General and important labels..... 1

|                                                         |   |
|---------------------------------------------------------|---|
| Identification numbers .....                            | 1 |
| Primary Identification (PRI-ID)<br>number .....         | 1 |
| Hull Identification Number (HIN) .....                  | 1 |
| Engine serial number .....                              | 1 |
| Emission control information .....                      | 2 |
| Approval label of emission control<br>certificate ..... | 2 |
| Manufactured date label .....                           | 2 |
| Star labels .....                                       | 2 |
| Important labels .....                                  | 4 |
| Warning labels .....                                    | 5 |
| Other labels .....                                      | 7 |

## Safety information..... 9

|                                                        |    |
|--------------------------------------------------------|----|
| Limitations on who may operate<br>the watercraft ..... | 9  |
| Cruising limitations .....                             | 10 |
| Operation requirements .....                           | 12 |
| Recommended equipment .....                            | 14 |
| Hazard information .....                               | 15 |
| Watercraft characteristics .....                       | 15 |
| Water-skiing .....                                     | 17 |
| Rules of the Road .....                                | 18 |
| To get more boating safety<br>information .....        | 22 |
| Enjoy your watercraft<br>responsibly .....             | 23 |

## Features and functions..... 25

|                                                                |    |
|----------------------------------------------------------------|----|
| Location of main components .....                              | 25 |
| Operation of controls and other<br>functions .....             | 29 |
| Seat .....                                                     | 29 |
| Hood .....                                                     | 29 |
| Fuel tank filler cap .....                                     | 30 |
| Remote control transmitter<br>(for VX Deluxe/VX Cruiser) ..... | 30 |
| Engine stop switch .....                                       | 31 |
| Engine shut-off switch .....                                   | 31 |
| Start switch .....                                             | 32 |
| Throttle lever .....                                           | 32 |

|                                                            |    |
|------------------------------------------------------------|----|
| Cooling water pilot outlet .....                           | 32 |
| Steering system .....                                      | 33 |
| Shift lever<br>(for VX Deluxe/VX Cruiser) .....            | 33 |
| Handgrip .....                                             | 34 |
| Reboarding step (for VX Cruiser) ....                      | 34 |
| Bow eye .....                                              | 34 |
| Stern eyes .....                                           | 34 |
| Yamaha Engine Management<br>System (YEMS) .....            | 35 |
| Yamaha Security System<br>(for VX Deluxe/VX Cruiser) ..... | 35 |
| Multifunction information center .....                     | 37 |
| Storage compartments .....                                 | 41 |

## Operation..... 44

|                                              |    |
|----------------------------------------------|----|
| Fuel and oil .....                           | 44 |
| Fuel .....                                   | 44 |
| Engine oil .....                             | 45 |
| Pre-operation checks .....                   | 46 |
| Pre-operation check list .....               | 46 |
| Pre-operation check points .....             | 48 |
| Operation .....                              | 54 |
| Engine break-in .....                        | 54 |
| Launching the watercraft .....               | 54 |
| Starting the engine .....                    | 54 |
| Stopping the engine .....                    | 55 |
| Shifting<br>(for VX Deluxe/VX Cruiser) ..... | 56 |
| Leaving the watercraft .....                 | 56 |
| Operating your watercraft .....              | 57 |
| Getting to know your watercraft .....        | 57 |
| Learning to operate your<br>watercraft ..... | 57 |
| Riding with passengers .....                 | 58 |
| Starting the watercraft .....                | 58 |
| Boarding and starting in deep<br>water ..... | 59 |
| Capsized watercraft .....                    | 62 |
| Turning the watercraft .....                 | 63 |
| Stopping the watercraft .....                | 64 |
| Beaching the watercraft .....                | 65 |
| Docking the watercraft .....                 | 65 |

# Table of contents

---

|                                                              |           |                                   |           |
|--------------------------------------------------------------|-----------|-----------------------------------|-----------|
| Reverse on waterways<br>(for VX Deluxe/VX Cruiser) .....     | 65        | <b>Consumer information .....</b> | <b>88</b> |
| Operating in weeded areas .....                              | 66        | Limited warranty .....            | 88        |
| Post-operation care .....                                    | 66        | <b>YAMAHA EXTENDED SERVICE</b>    |           |
| Transporting .....                                           | 67        | (Y.E.S.) .....                    | 90        |
| <b>Maintenance and care.....</b>                             | <b>68</b> |                                   |           |
| Storage .....                                                | 68        |                                   |           |
| Flushing the cooling system .....                            | 68        |                                   |           |
| Lubrication .....                                            | 69        |                                   |           |
| Battery .....                                                | 69        |                                   |           |
| Cleaning the watercraft .....                                | 70        |                                   |           |
| <b>Maintenance and adjustments .....</b>                     | <b>70</b> |                                   |           |
| Owner's/operator's manual and<br>tool kit .....              | 71        |                                   |           |
| Periodic maintenance chart .....                             | 72        |                                   |           |
| Checking the fuel system .....                               | 74        |                                   |           |
| Engine oil and oil filter .....                              | 74        |                                   |           |
| Air filter element .....                                     | 74        |                                   |           |
| Checking the jet thrust nozzle<br>angle .....                | 74        |                                   |           |
| Checking the shift cable<br>(for VX Deluxe/VX Cruiser) ..... | 75        |                                   |           |
| Checking and adjusting the throttle<br>cable .....           | 75        |                                   |           |
| Cleaning and adjusting the spark<br>plugs .....              | 76        |                                   |           |
| Lubrication points .....                                     | 77        |                                   |           |
| Checking the battery .....                                   | 78        |                                   |           |
| Fuel injection system .....                                  | 79        |                                   |           |
| <b>Specifications .....</b>                                  | <b>80</b> |                                   |           |
| Specifications .....                                         | 80        |                                   |           |
| <b>Trouble recovery .....</b>                                | <b>81</b> |                                   |           |
| Troubleshooting .....                                        | 81        |                                   |           |
| Troubleshooting chart .....                                  | 81        |                                   |           |
| <b>Emergency procedures .....</b>                            | <b>84</b> |                                   |           |
| Cleaning the jet intake and<br>impeller .....                | 84        |                                   |           |
| Jumping the battery .....                                    | 85        |                                   |           |
| Replacing the fuses .....                                    | 85        |                                   |           |
| Towing the watercraft .....                                  | 86        |                                   |           |
| Submerged watercraft .....                                   | 86        |                                   |           |

# General and important labels

EJU30261

## Identification numbers

Record the Primary Identification (PRI-ID) number, Hull Identification Number (HIN), and engine serial number in the spaces provided for assistance when ordering genuine parts from a Yamaha dealer. Also record and keep these ID numbers in a separate place in case your watercraft is stolen.

EJU30281

### Primary Identification (PRI-ID) number

The PRI-ID number is stamped on a plate attached inside the engine compartment.

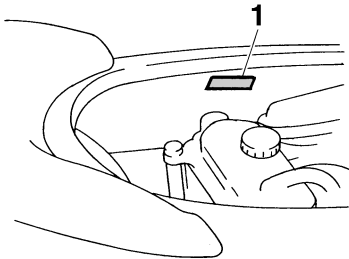
#### MODEL:

VX1100-H (VX)

VX1100C-H (VX Sport)

VX1100B-H (VX Deluxe)

VX1100A-H (VX Cruiser)



1 Primary Identification (PRI-ID) number location

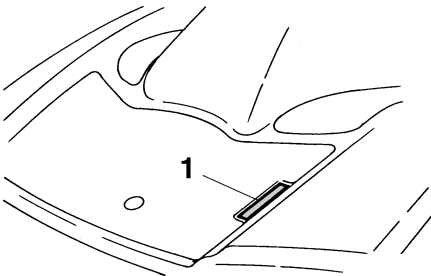
|                                                                                                                                                      |                              |
|------------------------------------------------------------------------------------------------------------------------------------------------------|------------------------------|
| MODEL <input type="text"/>                                                                                                                           | PRI-ID. <input type="text"/> |
| YAMAHA MOTOR CO., LTD.<br>ASSEMBLED IN U.S.A. FROM AMERICAN AND JAPANESE COMPONENTS.<br>ASSEMBLÉ AUX ÉTATS-UNIS DE PIÈCES AMÉRICAINES ET JAPONAISES. |                              |

|   |   |   |   |                      |                      |                      |                      |                      |                      |
|---|---|---|---|----------------------|----------------------|----------------------|----------------------|----------------------|----------------------|
| F | 2 | L | - | <input type="text"/> | <input type="text"/> | <input type="text"/> | <input type="text"/> | <input type="text"/> | <input type="text"/> |
|---|---|---|---|----------------------|----------------------|----------------------|----------------------|----------------------|----------------------|

EJU30300

## Hull Identification Number (HIN)

The HIN is stamped on a plate attached to the aft deck.



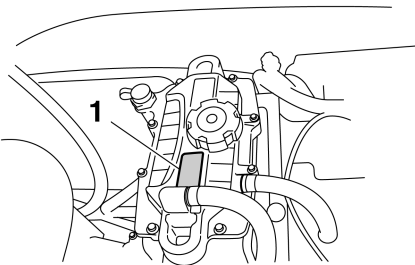
1 Hull Identification Number (HIN) location

|   |   |   |   |   |   |                      |                      |                      |                      |                      |                      |                      |                      |                      |                      |
|---|---|---|---|---|---|----------------------|----------------------|----------------------|----------------------|----------------------|----------------------|----------------------|----------------------|----------------------|----------------------|
| U | S | - | Y | A | M | <input type="text"/> | <input type="text"/> | <input type="text"/> | <input type="text"/> | <input type="text"/> | <input type="text"/> | <input type="text"/> | <input type="text"/> | <input type="text"/> | <input type="text"/> |
|---|---|---|---|---|---|----------------------|----------------------|----------------------|----------------------|----------------------|----------------------|----------------------|----------------------|----------------------|----------------------|

EJU30310

## Engine serial number

The engine serial number is stamped on a plate attached to the engine unit.



1 Engine serial number location

|                        |                      |                      |
|------------------------|----------------------|----------------------|
| YAMAHA                 |                      | <input type="text"/> |
| <input type="text"/>   | <input type="text"/> | <input type="text"/> |
| YAMAHA MOTOR CO., LTD. |                      |                      |
| MADE IN JAPAN          |                      |                      |
| PAYS D'ORIGINE JAPON   |                      |                      |

# General and important labels

EJU30350

## Emission control information

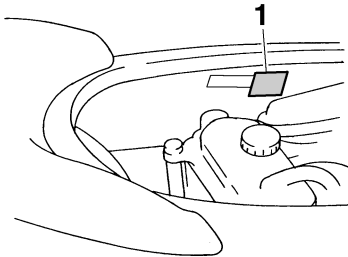
This engine conforms to 2009 U.S. Environmental Protection Agency (EPA) and/or California Air Resources Board (CARB) regulations for marine SI engines.

This engine is certified to operate on regular unleaded gasoline.

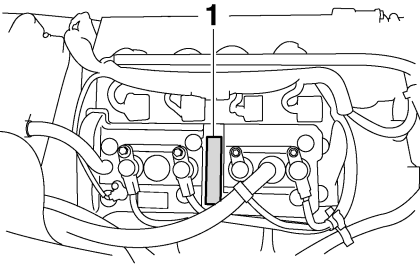
EJU30400

## Approval label of emission control certificate

This label is attached to the top of the cylinder head and to the inside of the engine compartment.



1 Emission control information label location



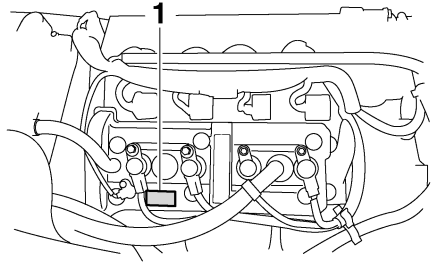
1 Emission control information label location

| EMISSION CONTROL INFORMATION                                                                                                                                                  |                            |  |                                 | SFI |
|-------------------------------------------------------------------------------------------------------------------------------------------------------------------------------|----------------------------|--|---------------------------------|-----|
| ENGINE FAMILY: *****                                                                                                                                                          |                            |  |                                 |     |
| THIS ENGINE CONFORMS TO ***** CALIFORNIA AND U.S. EPA EMISSION REGULATIONS FOR SI MARINE ENGINES. REFER TO THE OWNER'S MANUAL FOR MAINTENANCE SPECIFICATIONS AND ADJUSTMENTS. |                            |  |                                 |     |
| FUEL: *****                                                                                                                                                                   | ADVERTISED POWER: *****    |  | FUEL: UNLEADED REGULAR GASOLINE |     |
| SPIRIT PLUG: *****                                                                                                                                                            | TROILING SPEED: *****      |  | VALVE LASH(mm/in): *****        |     |
| DISPLACEMENT: *****                                                                                                                                                           | SPIRIT PLUG GAP(mm): ***** |  | *****                           |     |
| YAMAHA MOTOR CO.,LTD.                                                                                                                                                         |                            |  |                                 |     |

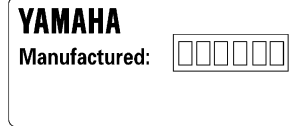
EJU30430

## Manufactured date label

This label is attached to the top of the cylinder head.



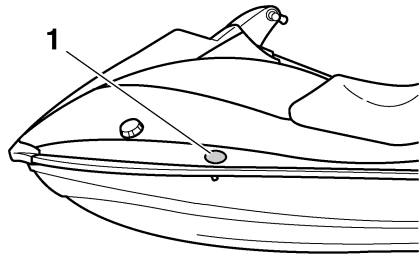
1 Manufactured date label location



EJU30440

## Star labels

This watercraft is labeled with a California Air Resources Board (CARB) star label. See below for a description of your particular label.



1 Star label location

# General and important labels

---

## One Star - Low Emission

The one-star label identifies engines that meet the Air Resources Board's Personal Watercraft and Outboard marine engine 2001 exhaust emission standards. Engines meeting these standards have 75% lower emissions than conventional carbureted two-stroke engines. These engines are equivalent to the U.S. EPA's 2006 standards for marine engines.



## Two Stars - Very Low Emission

The two-star label identifies engines that meet the Air Resources Board's Personal Watercraft and Outboard marine engine 2004 exhaust emission standards. Engines meeting these standards have 20% lower emissions than One Star-Low Emission engines.



## Three Stars - Ultra Low Emission

The three-star label identifies engines that meet the Air Resources Board's Personal Watercraft and Outboard marine engine 2008

exhaust emission standards or the Sterndrive and Inboard marine engine 2003-2008 exhaust emission standards. Engines meeting these standards have 65% lower emissions than One Star-Low Emission engines.



## Four Stars - Super Ultra Low Emission

The four-star label identifies engines that meet the Air Resources Board's Sterndrive and Inboard marine engine 2009 exhaust emission standards. Personal Watercraft and Outboard marine engines may also comply with these standards. Engines meeting these standards have 90% lower emissions than One Star-Low Emission engines.



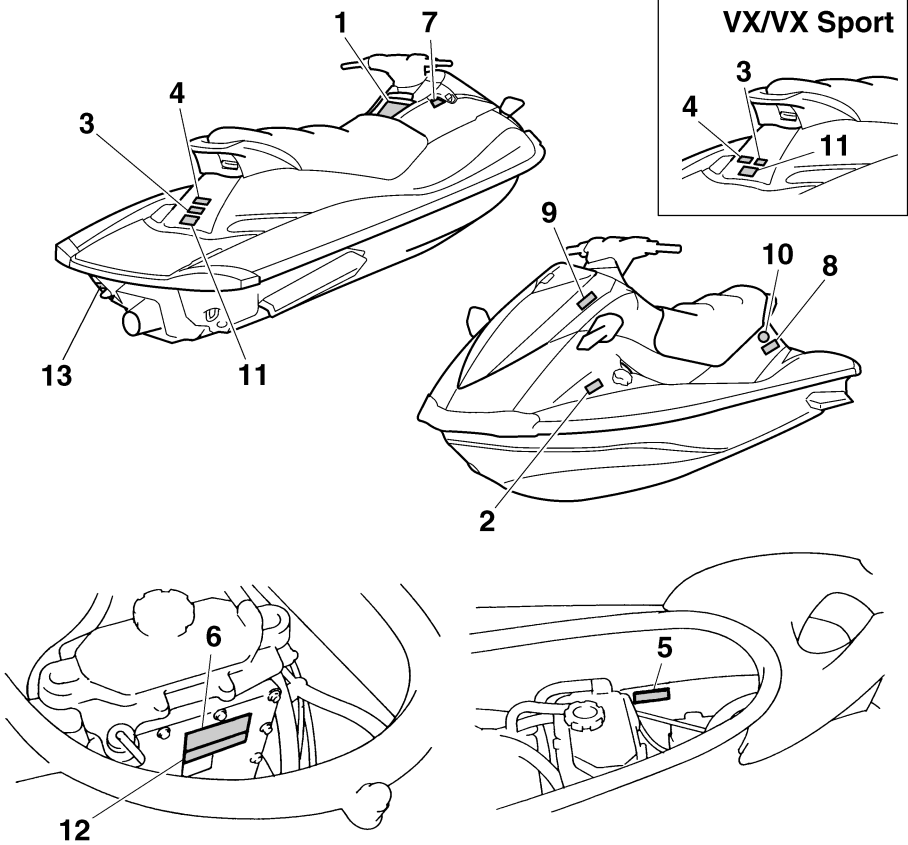


# General and important labels

EJU30451

## Important labels

Read the following labels before operating this watercraft. If you need any additional information, contact a Yamaha dealer.



## EJU35911

If any of these labels are damaged or missing, contact a Yamaha dealer for replacements.

1



2



# General and important labels

3

## ⚠ WARNING

- Severe internal injuries can occur if water is forced into body cavities as a result of being near jet thrust nozzle.
- Wear a wetsuit bottom or clothing that provides equivalent protection.
- Do not board PWC if operator is applying throttle.

(F1B-U41E1-21)  
(F1S-U41E1-01)

4

## ⚠ WARNING

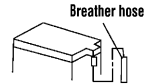
Do not use cleat or grips to lift PWC.  
PWC could fall, which could result in severe injury.

(F1B-U41E1-21)  
(F1S-U41E1-01)

5

## ⚠ WARNING

Be sure to connect breather hose to battery. Fire or explosion could result if not connected properly.



YAMAHA

F0V-U41DB-02

6

## ⚠ WARNING / AVERTISSEMENT / 警告

Do not touch or remove electrical parts when starting or running the engine.

Ne pas toucher ou retirer les pièces électriques lors du démarrage ou de la marche du moteur.

運転中は電装品には触らないでください。

YAMAHA

6B6-83623-00

For VX Deluxe/VX Cruiser only

7

## ⚠ WARNING

### REVERSE SHIFT LEVER OPERATION:

- Shift only while engine is idling or off.
- Reverse is for low speed maneuvering only.
- Do not use reverse function to slow down or stop PWC as it could cause you to lose control, be ejected, or impact handlebars.
- Make sure that there are no obstacles or people behind you before shifting to reverse.

F0V-U41DS-21

# General and important labels

EJU35923

## Other labels

8

**RATED PERSON CAPACITY:3**  
**MAXIMUM LOAD:240 kg (530 lb)**

YAMAHA

F0P-U41G1-01  
F1S-U41G1-01

9

**FIRE EXTINGUISHER CONTAINER**

F0V-U41F5-01

10

THIS CRAFT COMPLIES WITH SAE J2120, J2034, J1973, J2046, J2608

NATIONAL MARINE MANUFACTURERS ASSOCIATION CERTIFIED

**3**

RATED PERSONS CAPACITY

MODEL: VX110  
MFG: YAMAHA

**NMMMA**  
CERTIFIED

11

**YAMAHA Motor Corporation, U.S.A.**  
**P.O. Box 6555 Cypress, CA 90630**

**THIS BOAT IS NOT REQUIRED TO COMPLY WITH THE FOLLOWING U.S. COAST GUARD SAFETY STANDARDS IN EFFECT ON THE DATE OF CERTIFICATION:**

- Display of Capacity Information
- Safe Loading
- Flotation
- Electrical System (183.425 Conductors)
- Fuel System
- Powered Ventilation

**AS AUTHORIZED BY U.S. COAST GUARD GRANT OF EXEMPTION.**

**(CGB86-039)**

(F1B-U41E1-21)  
(F1S-U41E1-01)

12

**All applicable electrical system components installed as original equipment meet appropriate U.S.C.G. requirements for ignition protection.(Ref.33 CFR 183.410 and 183.440)**

YAMAHA

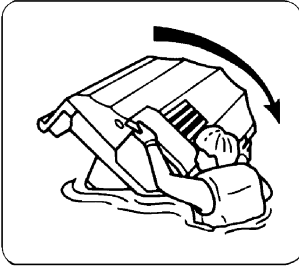
60E-83627-00

# General and important labels

---

The following label indicates the correct direction to upright a capsized watercraft.

**13**



GA9-U418F-00  
F1G-U418F-00

# Safety information

EJU30671

**The safe use and operation of this watercraft is dependent upon the use of proper riding techniques, as well as upon the common sense, good judgment, and expertise of the operator. Every operator should know the following requirements before riding the watercraft.**

- Before operating the watercraft, read this owner's/operator's manual, the Riding Practice Guide, the Riding Instruction card, and all labels on the watercraft. Also, watch the Basic Orientation Video provided with your watercraft. These materials should give you an understanding of the watercraft and its operation.
- Never allow anyone to operate this watercraft until they too have read this owner's/operator's manual, the Riding Practice Guide, the Riding Instruction card, and all labels, and, if possible, watched the Basic Orientation Video.

Showing them the video may help reinforce the information contained in these materials.

EJU30730

## **Limitations on who may operate the watercraft**

- Yamaha recommends a minimum operator age of 16 years old.  
Adults must supervise use by minors.  
Know the operator age and training requirements for your state. A boating safety course is recommended and may be required in your state. You can find local rules by contacting the United States Coast Guard (USCG), the National Association of State Boating Law Administrators, or your local Power Squadron.
- This watercraft is designed to carry the operator and up to 2 passengers. Never exceed the maximum load limit or allow more than 3 persons (or 2 persons if a water-skier is being pulled) to ride the watercraft at any time.



Maximum load:  
240 kg (530 lb)  
Load is the total weight of cargo, operator, and passengers.

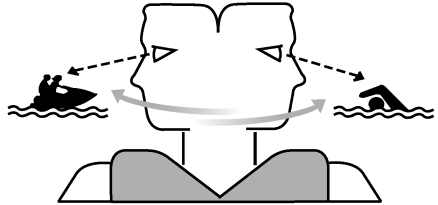
- Do not operate the watercraft with any passengers on board until you have considerable practice and experience riding alone. Operating the watercraft with passengers requires more skill. Take the time to become accustomed to the handling charac-

teristics of the watercraft before trying any difficult maneuvers.

EJU30761

## Cruising limitations

- Scan constantly for people, objects, and other watercraft. Be alert for conditions that limit your visibility or block your vision of others.

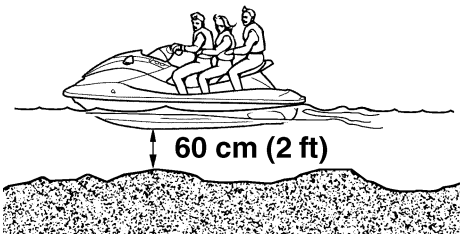


- Operate defensively at safe speeds and keep a safe distance away from people, objects, and other watercraft.
- Do not follow directly behind watercraft or other boats.
- Do not go near others to spray or splash them with water.
- Avoid sharp turns or other maneuvers that make it hard for others to avoid you or understand where you are going.
- Avoid areas with submerged objects or shallow water.
- Take early action to avoid collisions. Remember, watercraft and other boats do not have brakes.
- Do not release the throttle lever when trying to steer away from objects—you need throttle to steer. Always check throttle and steering controls before starting the watercraft.
- Ride within your limits and avoid aggressive maneuvers to reduce the risk of loss of control, ejection, and collision.
- This is a high performance boat—not a toy. Sharp turns or jumping wakes or waves can increase the risk of back/spinal injury (paralysis), facial injuries, and broken legs, an-

## Safety information

kles, and other bones. Do not jump wakes or waves.

- Do not operate the watercraft in rough water, bad weather, or when visibility is poor; this may lead to an accident causing injury or death. Be alert to the possibility of adverse weather. Take note of weather forecasts and the prevailing weather conditions before setting out on your watercraft.
- As with any water sport, you should not operate your watercraft without someone else nearby. If you operate further than swimming distance from shore, you should be accompanied by another boat or watercraft, but make sure you stay a safe distance away. It's good, common sense.
- Never operate in water that is less than 60 cm (2 ft) deep from the bottom of the watercraft, otherwise you increase your chance of hitting a submerged object, which could result in injury.



- This watercraft is not equipped with lighting required for night operation. Do not operate the watercraft after sunset or before dawn, otherwise you increase the risk of colliding

with another boat, which could result in severe injury or death.



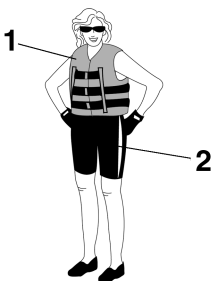
- Follow navigation rules, and state/provincial and local laws that apply to watercraft.



EJU30812

## Operation requirements

- All riders must wear a U.S. Coast Guard (USCG) approved personal flotation device (PFD) that is suitable for personal watercraft use.
- Wear protective clothing. Severe internal injuries can occur if water is forced into body cavities as a result of falling into the water or being near the jet thrust nozzle. Normal swimwear does not adequately protect against forceful water entry into the rectum or vagina. All riders must wear a wetsuit bottom or clothing that provides equivalent protection. Such clothing includes thick, tightly woven, sturdy and snug-fitting apparel such as denim, but does not include spandex or similar fabrics, like those used in bicycle shorts.



- 1 USCG approved PFD  
2 Wetsuit bottom

- Eye protection is recommended to keep wind, water, and glare from the sun out of your eyes while you operate your watercraft. Restraining straps for eyewear are made which are designed to float should your eyewear fall in the water. Footwear and gloves are recommended.
- Helmets meeting Snell or DOT standards are required for IJSBA-sanctioned races. You must decide whether to wear a helmet while you ride for recreation. You should

know that a helmet could help protect you in certain kinds of accidents and that it could injure you in others.

A helmet is designed to provide some head protection. Although helmets cannot protect against all foreseeable impacts, a helmet might reduce your injuries in a collision with a boat or other obstacle.

A helmet may have potential safety hazards, as well. Falling into the water could risk the chance of the helmet catching water, commonly known as “bucketing”, and the resulting strain on your neck could cause choking, severe and permanent neck injuries, or death. A helmet could also increase the risk of an accident if it reduces your vision or hearing, or if it distracts you or increases your fatigue.

How should you decide if a helmet’s potential safety benefits outweigh its potential risks for you? Consider your particular riding conditions. Consider factors such as your riding environment and your riding style and ability. Also consider the likelihood of traffic congestion, and the water surface conditions.

If you decide to wear a helmet based upon your riding circumstances, choose one carefully. Look for a helmet designed for personal watercraft use, if possible. Consider a helmet meeting Snell or DOT standards. If you will be engaging in closed-course competition, follow the helmet requirements of the sanctioning organization.

- Never operate the watercraft after consuming alcohol or taking other drugs.
- For reasons of safety and proper care of the watercraft, always perform the pre-operation checks listed on page 46 before operating the watercraft.

## Safety information

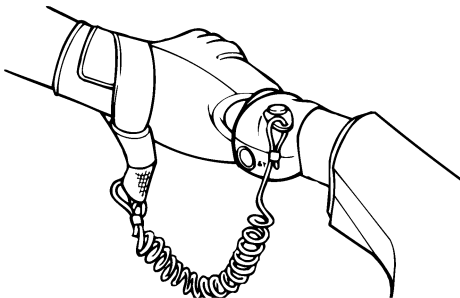
---

- The operator and passengers should always keep their feet on the floor of the footwell when the watercraft is in motion. Lifting your feet increases the chances of losing your balance, or hitting objects outside the watercraft with your feet. Do not give a ride to children if their feet cannot reach the floor of the footwell.
- The passengers should hold on firmly, either to the person in front of them or to the handgrip provided.



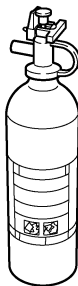
- Never allow a passenger to ride in front of the operator.
- Always consult your doctor on whether it is safe for you to ride this watercraft if you are pregnant or in poor health.
- Do not attempt to modify this watercraft. Modifications to your watercraft may reduce safety and reliability, and render the watercraft unsafe or illegal for use.
- Attach the engine shut-off cord (lanyard) to your left wrist and keep it free from the handlebars so that the engine stops if you, the operator, fall off. After riding, remove the engine shut-off cord (lanyard) from the wa-

tercraft to avoid accidental starting or unauthorized use by children or others.



- Scan carefully for swimmers and stay away from swimming areas. Swimmers are hard to see and you could accidentally hit someone in the water.
- Avoid being hit by another boat. You should always take the responsibility to watch for traffic; other boaters may not be watching for you. If they do not see you, or if you maneuver more quickly than other boaters expect, you risk a collision.
- Maintain a safe distance from other boats and watercraft, and also watch for ski ropes or fishing lines. Obey the “Rules of the Road” and be sure to check behind you before making a turn. (See “Rules of the Road” on page 18.)
- According to the USCG, boats under 6.1 m (20 ft) in length like your watercraft must carry a fire extinguisher of a B-1 classification, with a capacity of two pounds or more when navigating in waters under USCG jurisdiction. In addition, most state and local

boating laws also require that the fire extinguisher be approved by the USCG.



EJU30830

### Recommended equipment

The following items should be carried on board your watercraft:

- Sound-signaling device  
You should carry a whistle or other sound-signaling device that can be used to signal other boats. See “Rules of the Road” for more information.
- Visual distress signals  
It is recommended that a U.S. Coast Guard approved pyrotechnic device be stored in a waterproof container on your watercraft. A mirror can also be used as an emergency signal. Contact a Yamaha dealer or the U.S. Coast Guard for more information.
- Watch  
A watch is helpful so you will know how long you have been operating the watercraft.
- Towline  
A towline can be used to tow a disabled watercraft in an emergency.

# Safety information

---

EJU30870

## Hazard information

- Never start the engine or let it run for any length of time in an enclosed area. Exhaust fumes contain carbon monoxide, a colorless, odorless gas that may cause loss of consciousness and death within a short time. Always operate the watercraft in an open area.
- Do not touch the hot oil tank, muffler, or engine during or immediately after engine operation; they can cause serious burns.

EJU30930

## Watercraft characteristics

- Jet thrust turns the watercraft. Releasing the throttle lever completely produces only minimum thrust. If you are traveling at speeds above trolling, you will have rapidly decreasing ability to steer without throttle. This model is equipped with the Yamaha Engine Management System (YEMS) that includes an off-throttle steering (OTS) system. It will activate at planing speeds should you attempt to steer the watercraft after releasing the throttle lever. The OTS system assists in turning by continuing to supply some thrust while the watercraft is decelerating, but you can turn more sharply if you apply throttle while turning the handlebars. The OTS system does not function below planing speeds or when the engine is off. Once the engine slows down, the watercraft will no longer turn in response to handlebar input until you apply throttle again or you reach trolling speed.  
Practice turning in an open area without obstacles until you have a good feel for this maneuver.
- This watercraft is water-jet propelled. The jet pump is directly connected to the engine. This means that jet thrust will produce some movement whenever the engine is running. There is no “neutral” position. You are in either “forward” or “reverse”, depending upon the shift lever position (for VX Deluxe/VX Cruiser).
- For VX Deluxe/VX Cruiser:  
Do not use the reverse function to slow down or stop the watercraft as it could cause you to lose control, be ejected, or impact the handlebars.  
This could increase the risk of back/spinal injury (paralysis), facial injuries, and broken

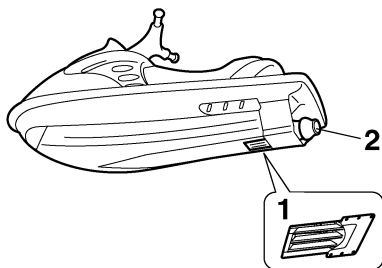
## **Safety information**

legs, ankles, and other bones. You could also damage the shift mechanism.

- For VX Deluxe/VX Cruiser:

Reverse can be used to slow down or stop during slow-speed maneuvering, such as when docking. Once the engine is idling, shift into reverse and gradually increase engine speed. Make sure that there are no obstacles or people behind you before shifting into reverse.

- Keep away from the intake grate while the engine is on. Items such as long hair, loose clothing, or PFD straps can become entangled in moving parts, resulting in severe injury or drowning.
- Never insert any object into the jet thrust nozzle while the engine is running. Severe injury or death could result from coming in contact with the rotating parts of the jet pump.

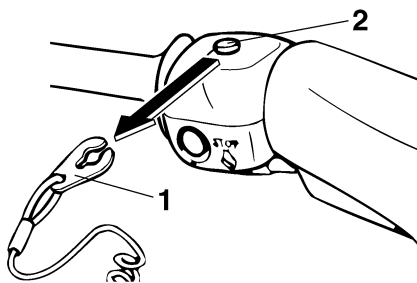


1 Intake grate

2 Jet thrust nozzle

- Stop the engine and remove the clip from the engine shut-off switch before removing

any debris or weeds, which may have collected around the jet intake.



1 Clip

2 Engine shut-off switch

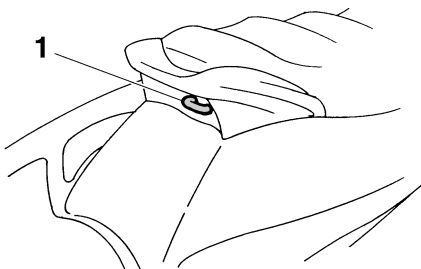
# Safety information

EJU30941

## Water-skiing

You can use the watercraft for water-skiing if it has the seating capacity to carry the operator, a rearward-facing spotter, and the water-skier when he or she is not skiing.

The watercraft must also have a cleat designed to pull a ski rope; do not attach the rope to any other location.



1 Cleat

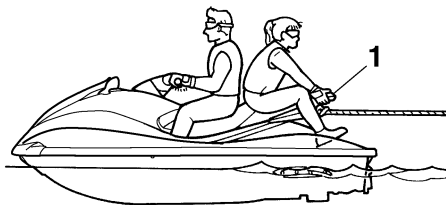
It is the watercraft operator's responsibility to be alert to the safety of the water-skier and others. Know and follow all state and local water-skiing regulations in effect for the waters in which you will be operating.

The operator should be comfortable carrying passengers before attempting to pull a skier. The following are some important considerations for minimizing risks while water-skiing.

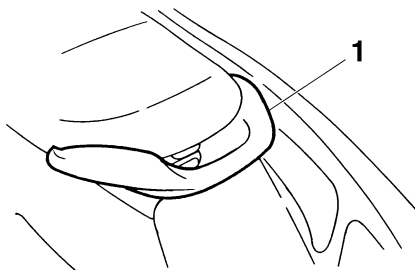
- The skier should wear an approved PFD, preferably a brightly colored one so boat operators can see the skier.
- The skier should wear protective clothing. Severe internal injuries can occur if water is forced into body cavities as a result of falling into the water. Normal swimwear does not adequately protect against forceful water entry into the rectum or vagina. The skier should wear a wetsuit bottom or clothing that provides equivalent protection.
- A second person should be on board as a spotter to watch the skier; in most states it

is required by law. Let the skier direct the operator's control of speed and direction with hand signals.

The spotter should sit astride the rear of the seat and hold onto the handgrip with both feet firmly on the floor of the footwell for proper balance while facing to the rear to watch the skier's hand signals and condition.



1 Handgrip



1 Handgrip

- Your control while pulling a water-skier is affected by the skier's ability, as well as water and weather conditions.
- When preparing to pull a skier, operate the watercraft at the slowest possible speed until the watercraft is well away from the skier and slack in the ski rope is taken up.

Make sure that the rope is not looped around anything.

After checking that the skier is ready and that there is no traffic or other obstacles, apply enough throttle to raise the skier.

- Make smooth, wide turns. The watercraft is capable of very sharp turns, which could exceed the abilities of the skier. Keep the skier at least 50 m (150 ft), about twice the distance of a standard ski rope, from any potential hazard.
- Be alert to the hazard of the ski rope handle snapping back at the watercraft when the skier falls or is unable to get up on the skis.
- Towing heavy or bulky objects other than skiers, such as another boat or watercraft, can cause loss of steering control and create a hazardous condition. If you must tow another boat in an emergency situation, operate slowly and cautiously.

EJU30961

## Rules of the Road

**Your Yamaha watercraft is legally considered a powerboat. Operation of the watercraft must be in accordance with the rules and regulations governing the waterway on which it is used.**

Just as there are rules that apply when you are driving on streets and highways, there are waterway rules that apply when you are operating your watercraft. These rules are used internationally, and are also enforced by the United States Coast Guard and local agencies. You should be aware of these rules, and follow them whenever you encounter another vessel on the water.

Several sets of rules prevail according to geographic location, but are all basically the same as the International Rules of the Road. The rules presented here in this owner's/operator's manual are condensed, and have been provided for your convenience only. Consult your local U.S. Coast Guard Auxiliary or Department of Motor Vehicles for a complete set of rules governing the waters in which you will be operating your watercraft.

### Steering and sailing rules

Whenever two vessels on the water meet one another, one vessel has the right-of-way; it is called the "stand-on" vessel. The vessel that does not have the right-of-way is called the "give-way" or "burdened" vessel. These rules determine which vessel has the right-of-way, and what each vessel should do.

### Stand-on vessel

The vessel with the right-of-way has the duty to continue its course and speed, except to avoid an immediate collision. When you maintain your direction and speed, the other vessel will be able to determine how best to avoid you.

## Safety information

### Give-way vessel

The vessel which does not have the right-of-way has the duty to take positive and timely action to stay out of the way of the stand-on vessel. Normally, you should not cross in front of the vessel with the right-of-way. You should slow down or change directions briefly and pass behind the other vessel. You should always move in such a way that the operator of the other vessel can see what you are doing. The General Prudential Rule regarding the right-of-way is that if a collision appears unavoidable, neither boat has the right-of-way. Both boats must avoid the collision.

In other words, follow the standard rules except when a collision will occur unless both vessels try to avoid each other. If that is the case, both vessels become give-way vessels.

### Rules when encountering vessels

There are three main situations that you may encounter with other vessels which could lead to a collision unless the Steering Rules are followed:

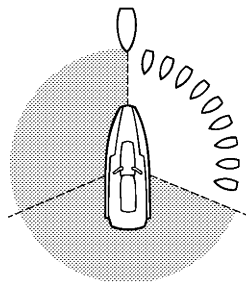
**Meeting:** you are approaching another vessel head-on

**Crossing:** you are traveling across another vessel's path

**Overtaking:** you are passing or being passed by another vessel

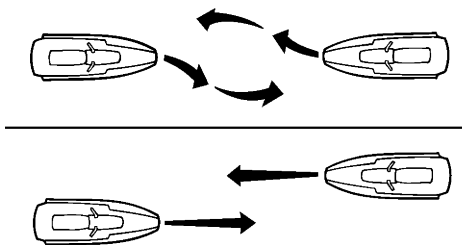
In the following illustration, your watercraft is in the center. You should give the right-of-way to any vessels shown in the white area (you are the give-way vessel). Any vessels in the shaded area must yield to you (they are the

give-way vessels). Both you and the meeting vessel must alter course to avoid each other.



### Meeting

If you are meeting another power-driven vessel head on, and are close enough to run the risk of collision, neither of you has the right-of-way. Both of you should alter course to avoid an accident. You should keep the other vessel on your port (left) side. This rule does not apply if both of you will clear one another if you continue on your set course and speed.

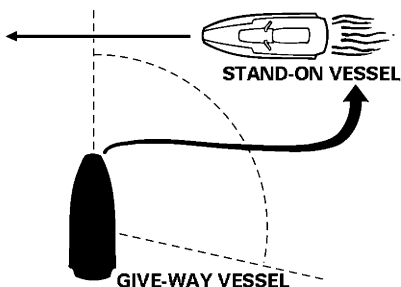


### Crossing

When two power-driven vessels are crossing each other's path close enough to run the risk of collision, the vessel which has the other on the starboard (right) side must keep out of the way of the other. If the other vessel is on your starboard (right) side, you must keep out of its way; you are the give-way vessel. If the other vessel is on your port (left) side, remember that you should maintain course and direction,



provided the other vessel gives you the right-of-way as it should.



### Overtaking

If you are passing another vessel, you are the give-way vessel. This means that the other vessel is expected to maintain its course and speed. You must stay out of its way until you are clear of it. Likewise, if another vessel is passing you, you should maintain your speed and direction so that the other vessel can steer itself around you.

### Other special situations

There are three other rules you should be aware of when riding your watercraft around other vessels.

### Narrow channels and bends

When navigating in narrow channels, you should keep to the right when it is safe and practical to do so. If the operator of a power-driven vessel is preparing to go around a bend that may obstruct the view of other water vessels, the operator should sound a prolonged blast of four to six seconds on the whistle. If another vessel is around the bend, it too should sound the whistle. Even if no reply is heard, however, the vessel should still proceed around the bend with caution. If you navigate such waters with your watercraft, you will need to carry a portable air horn, available from local marine supply stores.

### Fishing vessel right-of-way

All vessels fishing with nets, lines, or trawls are considered to be “fishing vessels” under the International Rules. Vessels with trolling lines are not considered fishing vessels. Fishing vessels have the right-of-way regardless of position. Fishing vessels cannot, however, impede the passage of other vessels in narrow channels.

### Sailing vessel right-of-way

Sailing vessels should normally be given the right-of-way. The exceptions to this are:

- (1) When the sailing vessel is overtaking the power-driven vessel, the power-driven vessel has the right-of-way.
- (2) Sailing vessels should keep clear of any fishing vessel.
- (3) In a narrow channel, a sailing vessel should not hamper the safe passage of a power-driven vessel that can navigate only in such a channel.

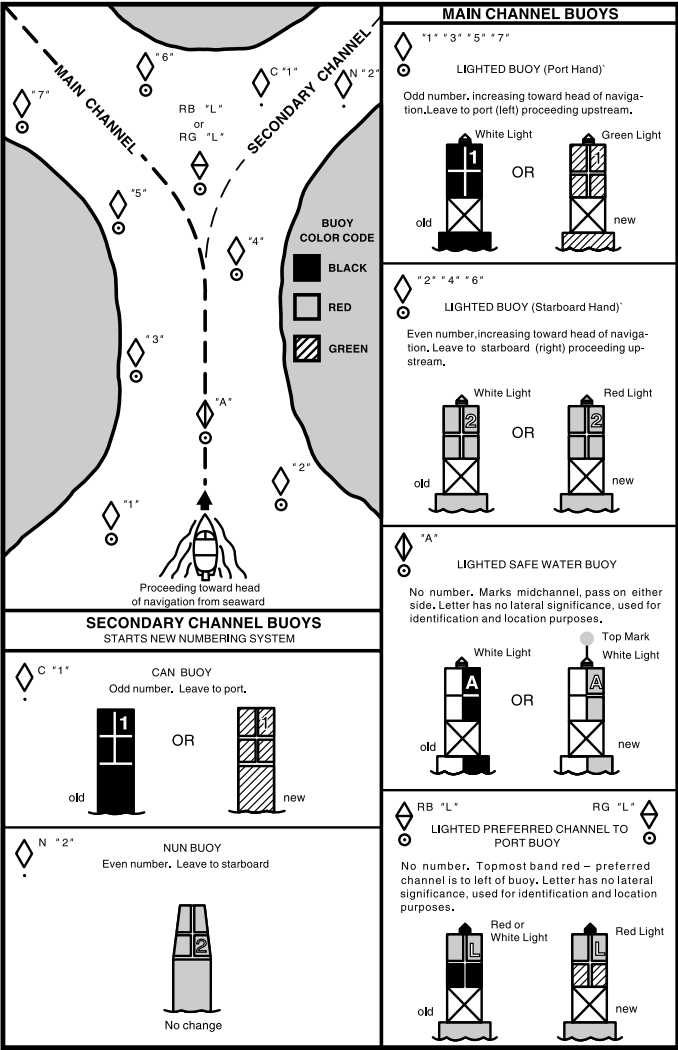
### Reading buoys and other markers

The waters of the United States are marked for safe navigation by the lateral system of buoyage. Simply put, buoys and markers have an arrangement of shapes, colors, numbers, and lights to show which side of the buoy a boater should pass on when navigating in a particular direction. The markings on these buoys are oriented from the perspective of being entered from seaward (the boater is going towards the harbor). Red buoys are passed on your starboard (right) side when proceeding from open water into the harbor, and black buoys are to your port (left) side. An easy way to remember the meaning of the colors is the phrase “red right returning”. When navigating out of the harbor, your position with respect to the buoys should be reversed; red buoys should be to port and black buoys to starboard.

# **Safety information**

Many bodies of water used by boaters are entirely within the boundaries of a particular state. The Uniform State Waterway Marking System has been devised for these waters. This system uses buoys and signs with distinctive shapes and colors to show regulatory

or advisory information. These markers are white with black letters and orange borders. They signify speed zones, restricted areas, danger areas, and general information.



Remember, markings may vary by geographic location. Always consult local boating authorities before riding your watercraft in unfamiliar waters.

EJU30980

## **To get more boating safety information**

Be informed about boating safety. Additional publications and information can be obtained from many organizations, including the following.

### **United States Coast Guard**

Consumer Affairs Staff (G-BC)

Office of Boating, Public, and Consumer Affairs

U.S. Coast Guard Headquarters

Washington, D.C. 20593-0001

Boating Safety Hotline: 1-800-368-5647

### **Other sources**

You can find local rules by contacting the National Association of State Boating Law Administrators, or your local Power Squadron.

### **Watercraft Education and Training**

The Online Boating Safety Course, available through the watercraft section of the [yamaha-motor.com](http://yamaha-motor.com) website, is a free, 50 question learning course available to the public. Upon successful completion of 80 percent or better, the user can request a certificate of completion by mail or can download one immediately. The Online Boating Safety Course, provided by the Boat/US Foundation, is approved by the National Association of State Boating Law Administrators (NASBLA) and recognized by the United States Coast Guard. This course meets the education requirement for those states that recognize non-proctored, NASBLA-approved courses.

Yamaha is the watercraft industry's leading manufacturer to build awareness and support for boating education. In 1997, Yamaha launched its GET W.E.T. (Watercraft Education and Training) initiative and has since reached out to over one million Americans promoting the benefits of boating education.

The Online Boating Safety Course:  
<http://www.boatus.com/onlinecourse/>

EJU30991

## **Enjoy your watercraft responsibly**

You share the areas you enjoy when riding your watercraft with others and with nature. So your enjoyment includes a responsibility to treat these other people, and the lands, waters, and wildlife with respect and courtesy. Whenever and wherever you ride, think of yourself as the guest of those around you. Remember, for example, that the sound of your watercraft may be music to you, but it could be just noise to others. And the exciting splash of your wake can make waves others won't enjoy.

Avoid riding close to shoreline homes and waterfowl nesting areas or other wildlife areas, and keep a respectful distance from fishermen, other boats, swimmers, and populated beaches. When travel in areas like these is unavoidable, ride slowly and obey all laws.

Proper maintenance is necessary to ensure that the exhaust emission and sound levels of your watercraft will continue to be within regulated limits. You have the responsibility to make sure that the recommended maintenance in this owner's/operator's manual is carried out.

Remember, pollution can be harmful to the environment. Do not refuel or add oil where a spill could cause damage to nature. Remove your watercraft from the water and move it away from the shoreline before refueling. Dispose of water and any fuel and oil residue in the engine compartment according to local regulations. And keep your surroundings pleasant for the people and wildlife that share the waterways: don't litter.

When you ride responsibly, with respect and courtesy for others, you help ensure that our

waterways stay open for the enjoyment of a variety of recreational opportunities.

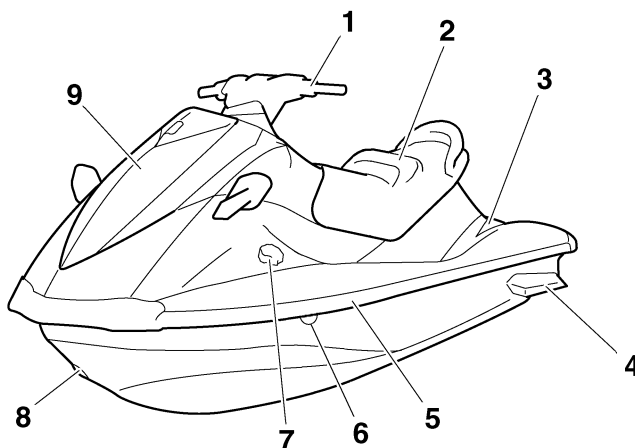
# Features and functions

---

EJU31010

## Location of main components

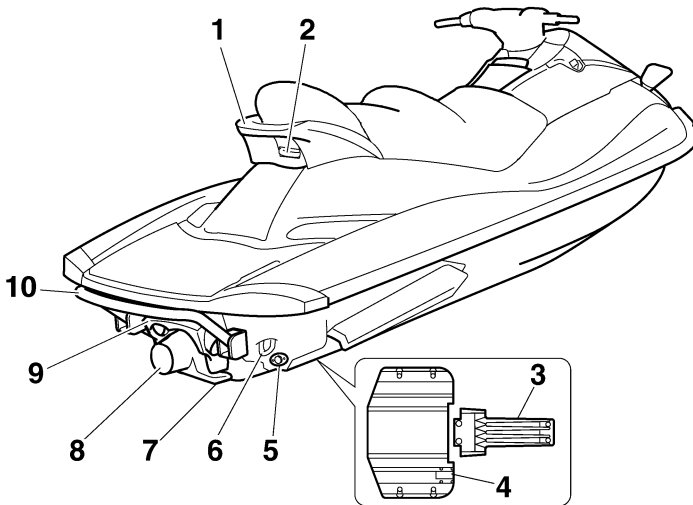
Front view



- 1 Handlebars
- 2 Seat
- 3 Footwell
- 4 Sponsons
- 5 Gunwale
- 6 Cooling water pilot outlet
- 7 Fuel tank filler cap
- 8 Bow eye
- 9 Hood

# Features and functions

## Rear view

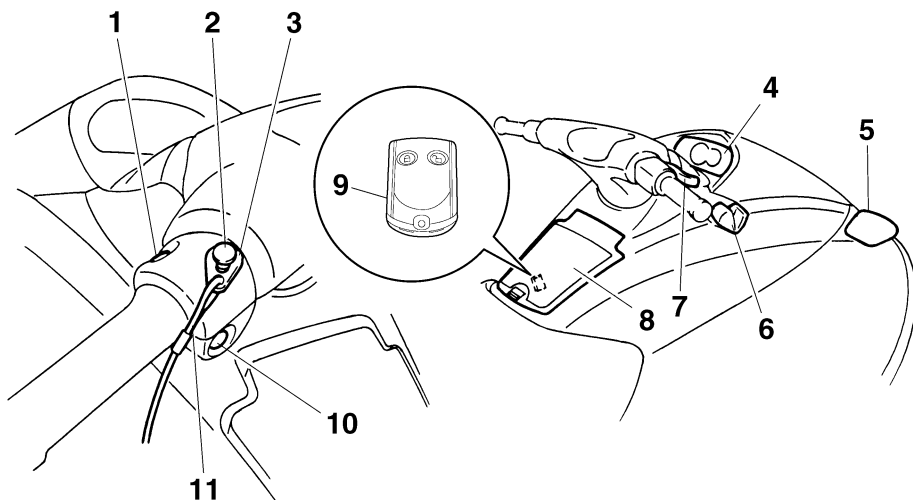


- 1 Handgrip
- 2 Cleat
- 3 Intake grate
- 4 Speed sensor
- 5 Stern drain plugs
- 6 Stern eyes
- 7 Ride plate
- 8 Jet thrust nozzle
- 9 Reverse gate (for VX Deluxe/VX Cruiser)
- 10 Reboarding step (for VX Cruiser)

# Features and functions

---

## Control system

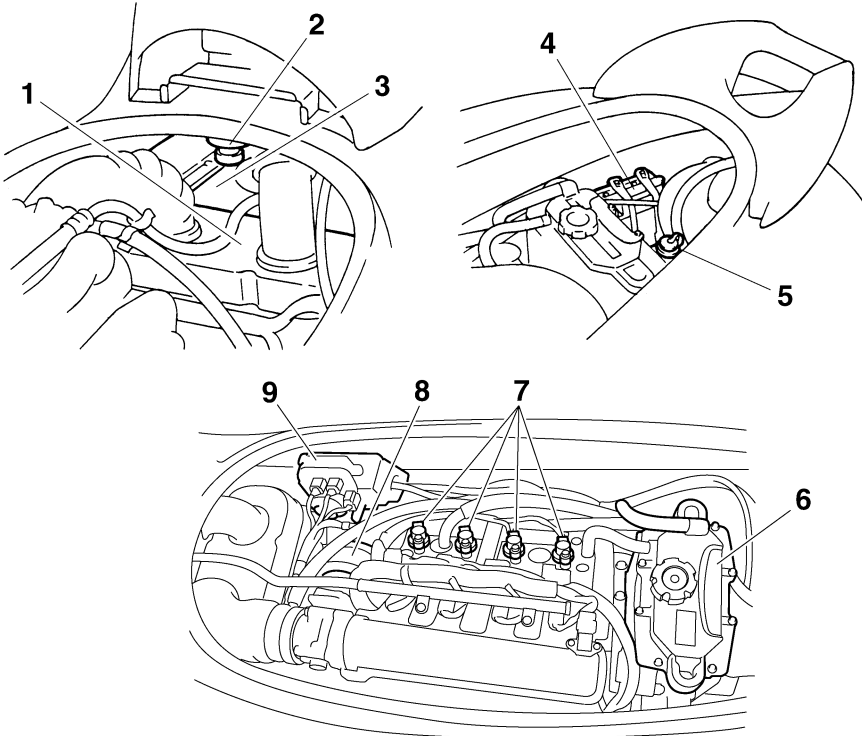


- 1 Start switch
- 2 Engine shut-off switch
- 3 Clip
- 4 Multifunction information center
- 5 Rearview mirrors (for VX Deluxe/VX Cruiser)
- 6 Shift lever (for VX Deluxe/VX Cruiser)
- 7 Throttle lever
- 8 Glove compartment
- 9 Remote control transmitter  
(for VX Deluxe/VX Cruiser)
- 10 Engine stop switch
- 11 Engine shut-off cord (lanyard)



# Features and functions

## Engine compartment



- 1 Air filter case
- 2 Water separator
- 3 Fuel tank
- 4 Battery
- 5 Flushing hose connector
- 6 Oil tank
- 7 Spark plugs/Spark plug caps/Ignition coils
- 8 Muffler
- 9 Electrical box

# Features and functions

EJU31021

## Operation of controls and other functions

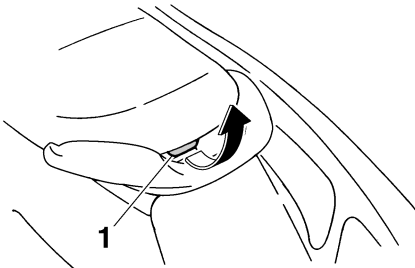
EJU31032

### Seat

To remove the seat:

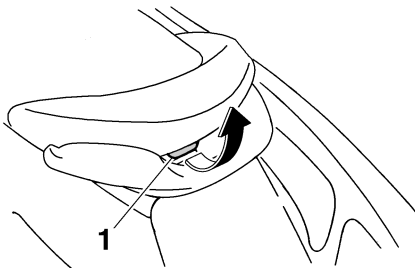
Pull the seat latch up, and then pull the seat off.

**VX/VX Sport/VX Deluxe**



1 Seat latch

**VX Cruiser**

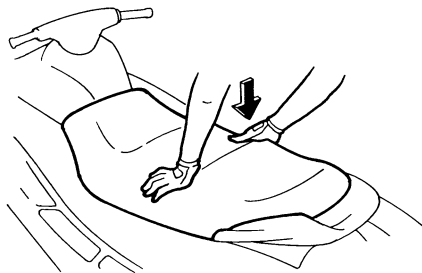
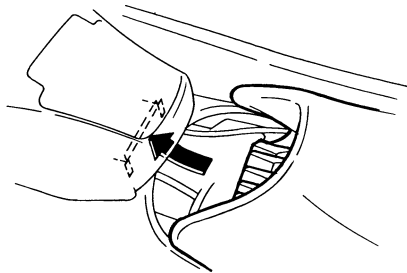


1 Seat latch

To install the seat:

Insert the projection on the front of the seat into the stay on the deck, and then push the rear of the seat down to lock it in place. Make

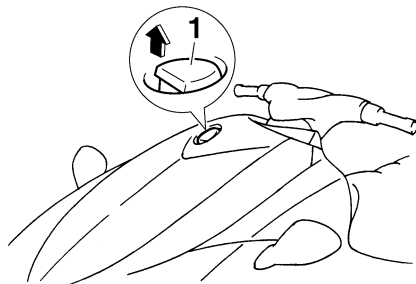
sure that the seat is securely installed before operating the watercraft.



EJU31072

### Hood

To open the hood, pull the hood latch up, and then lift up the hood.

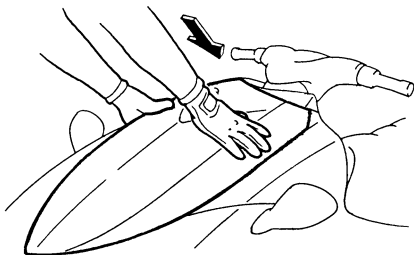


1 Hood latch

To close the hood, push down on the rear of the hood until it latches securely. Make sure

# Features and functions

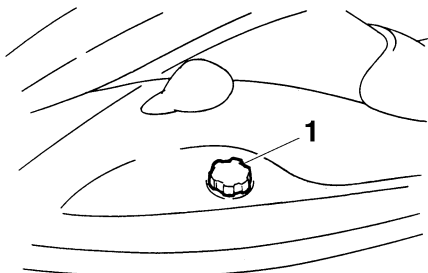
that the hood is securely closed before operating the watercraft.



EJU31091

## Fuel tank filler cap

To remove the fuel tank filler cap, turn it counterclockwise.



1 Fuel tank filler cap

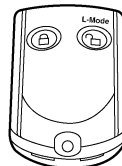
To install the fuel tank filler cap, turn it clockwise until it stops. Make sure that the fuel tank filler cap is securely closed before operating the watercraft.

EJU31133

## Remote control transmitter (for VX Deluxe/VX Cruiser)

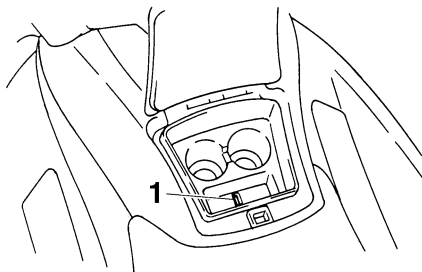
The Yamaha Security System and low-RPM mode settings are selected using the remote control transmitter. (See “Yamaha Security

System” on page 35 for information on using the remote control transmitter.)



The Yamaha Security System and low-RPM mode settings can only be selected using the remote control transmitter.

Store the remote control transmitter carefully so it will not be lost. When operating the watercraft, store the transmitter in the transmitter holder provided in the glove compartment.



1 Transmitter holder

ECJ00751

## NOTICE

- The remote control transmitter is not completely waterproof. Do not submerge the transmitter or operate it underwater. If the transmitter is submerged, dry it with a soft, dry cloth, and then check that it is operating properly. If the transmitter is not operating properly, contact a Yamaha dealer.

# Features and functions

---

- Keep the remote control transmitter away from high temperatures and do not place it in direct sunlight.
- Do not drop the remote control transmitter, subject it to strong shocks, or place any heavy items on it.
- Use a soft, dry cloth to clean the remote control transmitter. Do not use detergent, alcohol, or other chemicals.
- Do not attempt to disassemble the remote control transmitter yourself. Otherwise, the transmitter may not operate properly. If the transmitter needs a new battery, contact a Yamaha dealer.

---

## TIP:

- While the engine is running, input from the remote control transmitter is not received.
- If you accidentally lose your remote control transmitter, contact a Yamaha dealer.

This device complies with Part 15 of the FCC Rules. Operation is subject to the following two conditions: (1) this device may not cause harmful interference, and (2) this device must accept any interference received, including interference that may cause undesired operation.

ECJ00030

## NOTICE

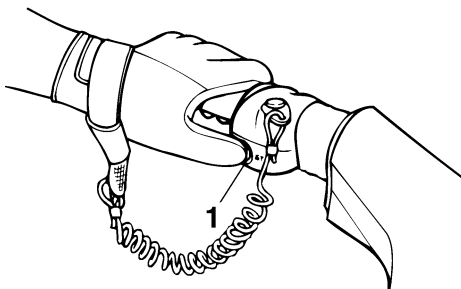
**Changes or modifications not expressly approved by the party responsible for compliance could void the user's authority to operate the remote control transmitter.**

---

EJU31150

## Engine stop switch

Push the engine stop switch (red button) to stop the engine normally.



1 Engine stop switch

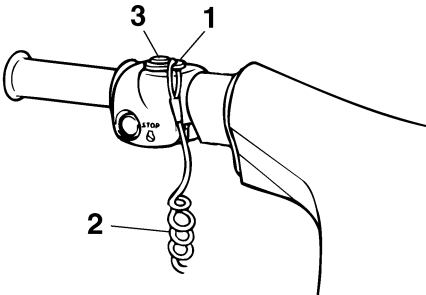
EJU31161

## Engine shut-off switch

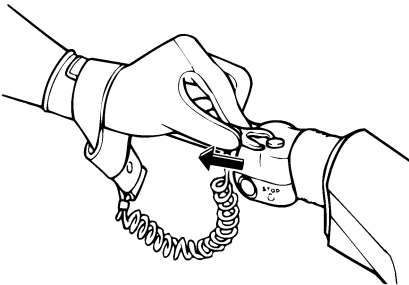
Attach one end of the engine shut-off cord (lanyard) to your left wrist, and then insert the clip on the other end under the engine shut-off switch (black button). The engine will stop automatically when the clip is removed from the switch, such as if the operator falls off the watercraft. Remove the engine shut-off cord (lanyard) from the watercraft when the engine

# Features and functions

is not running to prevent unauthorized use by children or others.



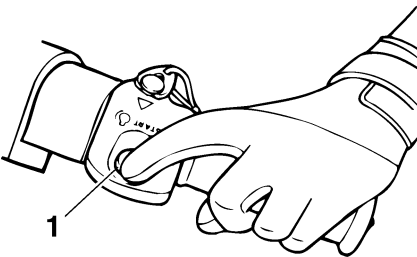
- 1 Clip
- 2 Engine shut-off cord (lanyard)
- 3 Engine shut-off switch



EJU31192

## Start switch

Push the start switch (green button) to start the engine.



- 1 Start switch

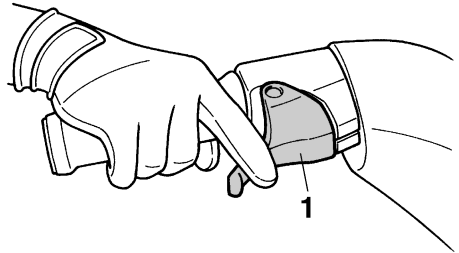
The engine will not start under any of the following conditions:

- Lock mode of the Yamaha Security System has been selected (for VX Deluxe/VX Cruiser). (See page 35 for Yamaha Security System lock and unlock mode selection procedures.)
- Clip is removed from the engine shut-off switch.
- Throttle lever is squeezed.

EJU31210

## Throttle lever

Squeeze the throttle lever to increase engine speed.



- 1 Throttle lever

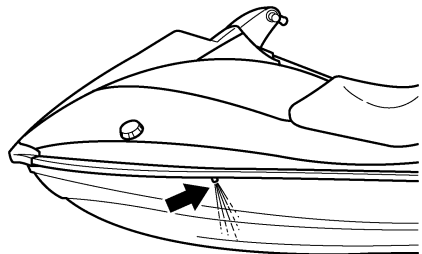
Release the throttle lever to decrease engine speed or to return it to the idle position.

EJU35971

## Cooling water pilot outlet

This watercraft is equipped with a cooling water pilot outlet.

When the engine is running, cooling water is circulated in the engine, and then it is discharged from the pilot outlet.



# Features and functions

To check for proper operation of the cooling system, check that water is being discharged from the pilot outlet. If water is not being discharged from the outlet, cooling water may not be circulating in the engine. When this occurs, stop the engine and check for the cause. (See pages 40 and 84 for more information.)

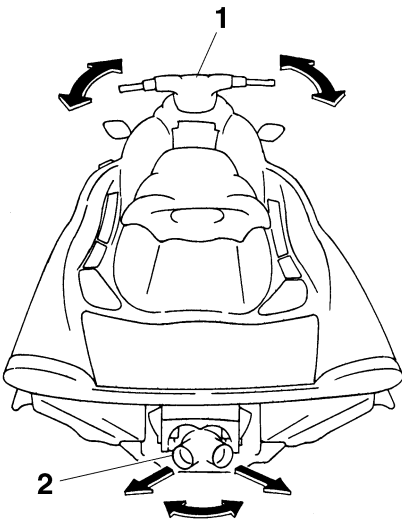
**TIP:**

- If the cooling water passages are dry, it will take about 60 seconds for the water to reach the outlet after the engine is started.
- Water discharge may not be constant at idle, therefore, open the throttle a little to check that water discharges properly.

EJU31260

**Steering system**

Your watercraft can be steered by turning the handlebars in the direction you wish to travel.



- 1 Handlebar
- 2 Jet thrust nozzle

When the handlebars are turned, the angle of the jet thrust nozzle is changed, and the direction of the watercraft is changed accordingly. Since the strength of the jet thrust determines the speed and degree of a turn, throttle must always be applied when attempting a turn, except at trolling speed.

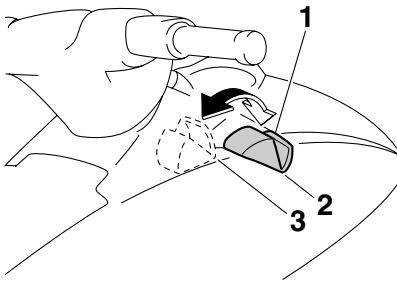
This model is equipped with the Yamaha Engine Management System (YEMS) that includes an off-throttle steering (OTS) system. It will activate at planing speeds should you attempt to steer the watercraft after releasing the throttle lever. The OTS system assists in turning by continuing to supply some thrust while the watercraft is decelerating, but you can turn more sharply if you apply throttle while turning the handlebars.

The OTS system does not function below planing speeds or when the engine is off. Once the engine slows down, the watercraft will no longer turn in response to handlebar input until you apply throttle again or you reach trolling speed.

EJU31301

**Shift lever (for VX Deluxe/VX Cruiser)**

The shift lever is located on the starboard (right) side of the watercraft and is used to control the reverse gate, which allows the watercraft to move in reverse or forward.



- 1 Shift lever
- 2 Forward position
- 3 Reverse position

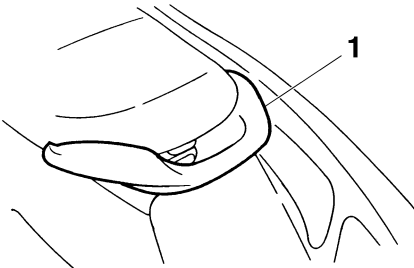
# Features and functions

When the shift lever is in the reverse position, the watercraft can be launched from a trailer, or backed up out of tight spots where you cannot turn around easily.

EJU31361

## Handgrip

The handgrip provides a handhold for boarding the watercraft and for a spotter when facing rearward. **WARNING! Do not use the handgrip to lift the watercraft. The handgrip is not designed to support the watercraft's weight. If the handgrip breaks, the watercraft could fall, which could result in severe injury.** [EWJ00021]



1 Handgrip

EJU34862

## Reboarding step (for VX Cruiser)

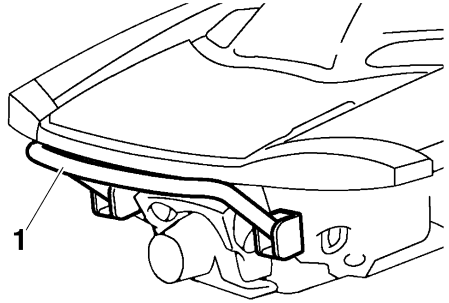
The reboarding step provides a handhold and footstep for boarding the watercraft. **WARNING! Do not use the reboarding step to lift the watercraft. The reboarding step is not designed to support the watercraft's weight. If the reboarding step breaks, the watercraft could fall, which could result in severe injury.** [EWJ01211]

ECJ00742

## NOTICE

Use the reboarding step only to board the watercraft in the water. Do not use the re-

boarding step for any other purpose. The watercraft can be damaged.



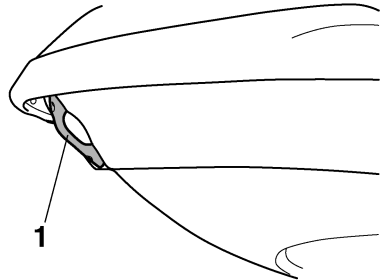
1 Reboarding step

EJU34870

## Bow eye

The bow eye is located at the bow of the watercraft.

The bow eye is used to attach a rope to the watercraft when transporting, mooring, or towing it in an emergency.



1 Bow eye

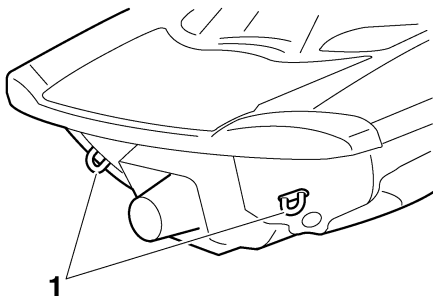
EJU34880

## Stern eyes

The stern eyes are located at the stern of the watercraft.

# Features and functions

The stern eyes are used to attach a rope to the watercraft when transporting or mooring it.



1 Stern eye

EJU31370

## Yamaha Engine Management System (YEMS)

This model is equipped with an integrated, computerized management system that controls and adjusts ignition timing, fuel injection, engine diagnostics, and the off-throttle steering (OTS) system.

EJU36761

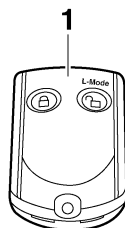
## Yamaha Security System (for VX Deluxe/VX Cruiser)

The Yamaha Security System functions to help prevent unauthorized use or theft of the watercraft. The engine cannot be started if the security system is in the lock mode. The engine can only be started in the unlock mode. The lock and unlock modes of the security system are selected using the remote control transmitter that is included with this watercraft.

### TIP:

Since the watercraft is programmed to recognize the internal code from this transmitter only, the security system setting can only be changed with this transmitter. If you lose the remote control transmitter or if it does not operate properly, contact a Yamaha dealer.

(See page 30 for information on using the remote control transmitter.)



1 Remote control transmitter

EJU36104

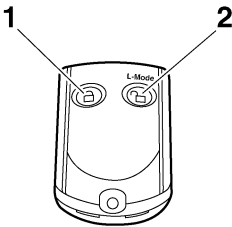
## Yamaha Security System settings (for VX Deluxe/VX Cruiser)

The Yamaha Security System settings are selected by pressing the lock or unlock button on the remote control transmitter briefly.

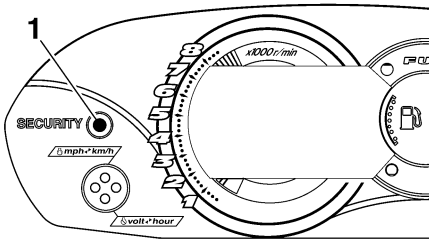


# Features and functions

Depending on the selected Yamaha Security System setting, the “SECURITY” indicator light will come on or go off.



- 1 Lock button
- 2 Unlock button



- 1 “SECURITY” indicator light

### TIP:

The lock and unlock modes of this system can only be selected while the engine is stopped.

### LOCK

When the lock button on the remote control transmitter is pressed briefly, the beeper sounds once and the “SECURITY” indicator light goes off. This indicates the lock mode is selected and the engine cannot be started.

### UNLOCK

When the unlock button on the remote control transmitter is pressed briefly, the beeper sounds two or three times and the “SECURITY” indicator light comes on. This indicates

the unlock mode is selected and the engine can be started.

### TIP:

The beeper sounds two times for the normal mode or three times for the low-RPM mode. (See the items in “Selecting the operation mode” for operation mode information.)

| Number of beeps | Yamaha Security System mode | Engine can be started |
|-----------------|-----------------------------|-----------------------|
| 1 beep          | Lock                        | NO                    |
| 2 beeps         | Unlock (normal mode)        | YES                   |
| 3 beeps         | Unlock (low-RPM mode)       | YES                   |

If neither the start switch nor the remote control transmitter is operated within 25 seconds after the unlock button is pressed to select the unlock mode, the multifunction information center will turn off and enter a standby state. To turn the multifunction information center back on, press the lock button on the transmitter briefly to select the lock mode, and then press the unlock button briefly to select the unlock mode.

### TIP:

If the engine is started while the multifunction information center is in the standby state, the “SECURITY” indicator light and “L-MODE” indicator light will not come on regardless of the setting.

EJU31413

### Selecting the operation mode (for VX Deluxe/VX Cruiser)

There are two operation modes in the unlock mode of the Yamaha Security System: the normal mode and the low-RPM mode. The normal mode and low-RPM mode can only be selected when the engine is stopped in the unlock mode. Press the unlock button on the remote control transmitter for more than 4

# Features and functions

seconds to switch between the normal mode and the low-RPM mode.

### Normal mode

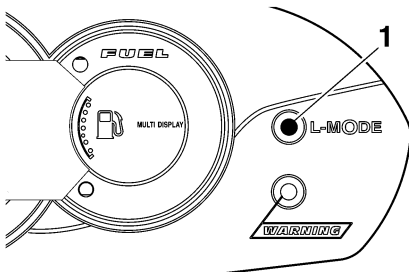
The watercraft can be ridden normally in this mode.

If the beeper sounds two times, the normal mode is activated.

### Low-RPM mode

Maximum engine speed (r/min) in this mode is limited to approximately 90% of the maximum engine speed in the normal mode.

If the beeper sounds three times, the low-RPM mode is activated and the “L-MODE” indicator light comes on.

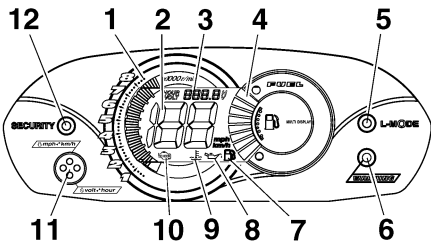


1 “L-MODE” indicator light

EJU31453

### Multifunction information center

This meter contains the following functions for help and convenience in operating the watercraft.



- 1 Tachometer
- 2 Speedometer
- 3 Hour meter/voltmeter
- 4 Fuel level meter
- 5 “L-MODE” indicator light (for VX Deluxe/VX Cruiser)
- 6 “WARNING” light
- 7 Fuel level warning indicator
- 8 Oil pressure warning indicator
- 9 Engine overheat warning indicator
- 10 Check engine warning indicator
- 11 Select button
- 12 “SECURITY” indicator light (for VX Deluxe/VX Cruiser)

When the engine is started, all displays light up for 2 seconds, and then the meter starts to operate normally.

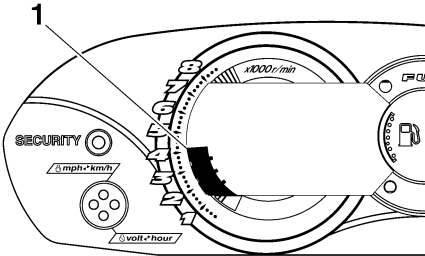
The current display will continue to operate for 25 seconds after the engine stops.

# Features and functions

EJU31461

## Tachometer

The engine speed (r/min) is displayed by segments. Each segment indicates a 250 r/min increment.

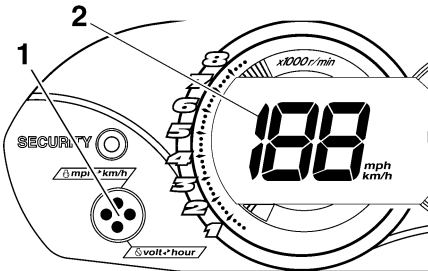


1 Tachometer

EJU31500

## Speedometer

The meter shows the watercraft speed against water.



- 1 Select button
- 2 Speedometer

### TIP:

To switch the speedometer display between kilometers and miles, push the select button for at least 1 second, within 10 seconds after the meter is displayed.

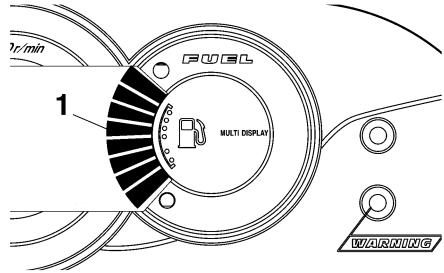
EJU31512

## Fuel level meter

The fuel level meter is provided for convenient fuel level checking while riding.

The fuel level meter has eight segments which show the amount of fuel remaining in

the fuel tank. The display segments of the fuel level meter disappear two at a time as the fuel level decreases.



1 Fuel level meter

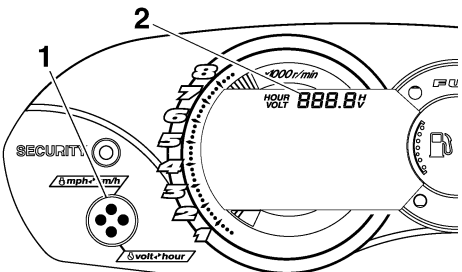
### TIP:

The fuel level is most accurate when the watercraft is sitting level on a trailer or in the water.

EJU31552

## Hour meter/voltmeter

To switch the display between the hour meter and the voltmeter, push the select button for at least 1 second after the meter is displayed for more than 10 seconds.



- 1 Select button
- 2 Hour meter/voltmeter

## Hour meter

The hour meter is provided to make it easy to follow the maintenance schedule.

The meter shows the hours of engine operation that have elapsed since the watercraft was new.

# Features and functions

## Voltmeter

The voltmeter is provided to display the voltage of the battery.

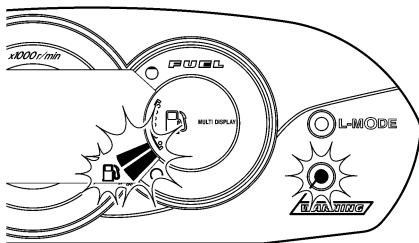
When the battery voltage is normal, the voltmeter displays approximately 12 volts.

If the battery voltage is less than 8.0 volts, “LO” is displayed on the voltmeter and if the voltage is above 18.1 volts, “HI” is displayed on the voltmeter. If “HI” or “LO” is displayed, return to shore and, if necessary, have a Yamaha dealer check the charging system and the battery.

EJU31562

## Fuel level warning indicator

If the fuel remaining in the fuel tank drops to about 13 L (3.4 US gal, 2.9 Imp. gal), the lowest two fuel level segments, the fuel level warning indicator, and the “WARNING” light begin to blink. The buzzer also starts sounding intermittently.

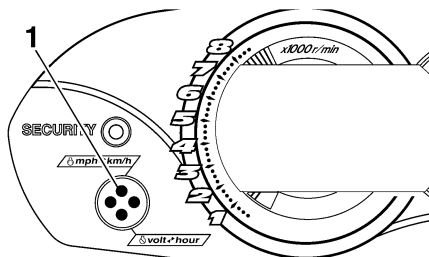


If this occurs, refill the fuel tank as soon as possible.

The warning signals will be cleared when the engine is restarted after the fuel tank is refilled.

## TIP:

Press the select button on the multifunction information center to stop the buzzer.

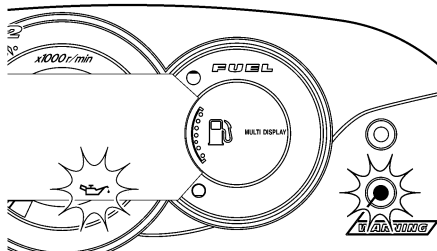


1 Select button

EJU31622

## Oil pressure warning indicator

If the oil pressure does not rise to specification, the “WARNING” light and the oil pressure warning indicator begin to blink, and the buzzer sounds intermittently. At the same time, the engine speed is limited to help prevent damage.

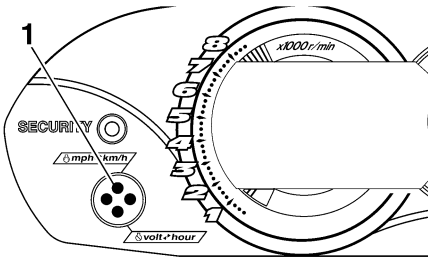


If this occurs, reduce the engine speed, return to shore, and then check the engine oil level. (See page 48 for engine oil level checking procedures.) If the oil level is low, add enough engine oil to raise it to the proper level. If the oil level is sufficient, have a Yamaha dealer check the watercraft.

# Features and functions

## TIP:

Press the select button on the multifunction information center to stop the buzzer.



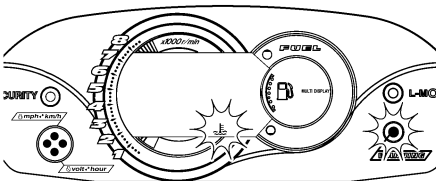
1 Select button

EJU31605

## Engine overheat warning indicator

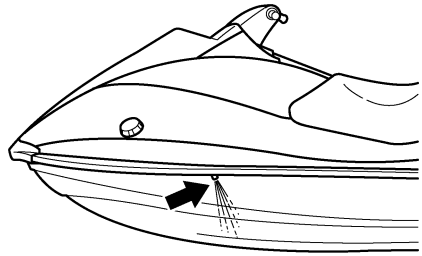
This model is equipped with an engine overheat warning system.

If the engine starts to overheat, the “WARNING” light and the engine overheat warning indicator blink, and then come on. The buzzer also begins to sound intermittently, and then it sounds continuously. After the light and indicator start to blink and the buzzer sounds, the engine speed is limited to help prevent damage.



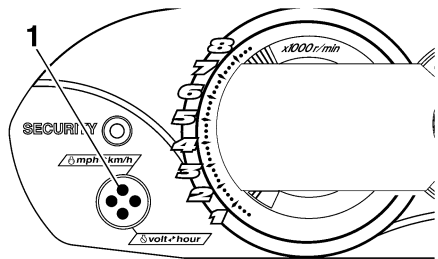
If this occurs, immediately reduce the engine speed, return to shore, and then check for water discharge at the port (left) cooling water pilot outlet while the engine is running. If there is no discharge of water, shut the engine off,

and then check the intake grate and impeller for clogging. (See page 84 for more information.) **NOTICE:** If you cannot locate and correct the cause of the overheating, consult a Yamaha dealer. Continuing to operate at higher speeds could result in severe engine damage. [ECJ00041]



## TIP:

Press the select button on the multifunction information center to stop the buzzer.



1 Select button

EJU31631

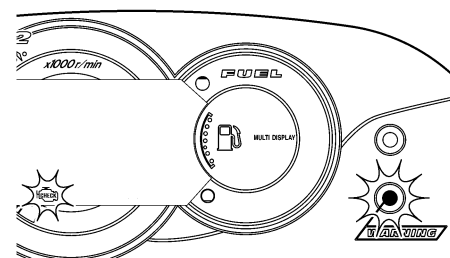
## Check engine warning indicator

If a sensor malfunction or a short circuit is detected, the “WARNING” light and the check

# Features and functions

engine warning indicator begin to blink, and the buzzer sounds intermittently.

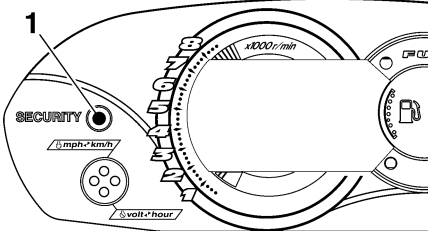
ridden normally when this light is on. (See page 35 for more information.)



If this occurs, reduce the engine speed, return to shore, and have a Yamaha dealer check the engine.

**TIP:**

Press the select button on the multifunction information center to stop the buzzer.

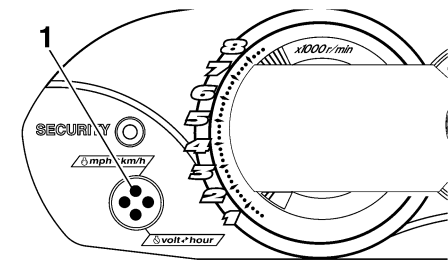


1 “SECURITY” indicator light

EJU35010

**“L-MODE” indicator light  
(for VX Deluxe/VX Cruiser)**

The “L-MODE” indicator light comes on when the low-RPM mode is selected. (See page 36 for more information.)

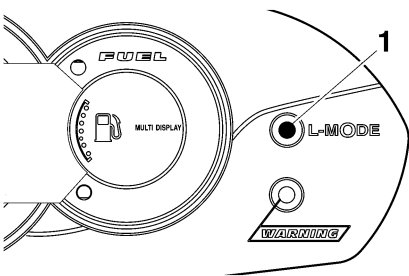


1 Select button

EJU35001

**“SECURITY” indicator light  
(for VX Deluxe/VX Cruiser)**

The “SECURITY” indicator light comes on when the unlock mode of the Yamaha Security System is selected. The watercraft can be



1 “L-MODE” indicator light

EJU31681

**Storage compartments**

A front storage compartment and a glove compartment are provided.

The storage compartments are not designed to be waterproof. If you carry objects that must be kept dry, such as the manuals, put them in a waterproof bag.

Make sure that the storage compartments are closed securely before operating the watercraft.

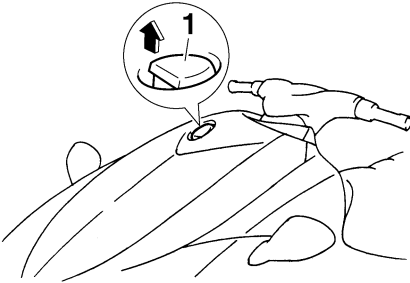
# Features and functions

EJU31712

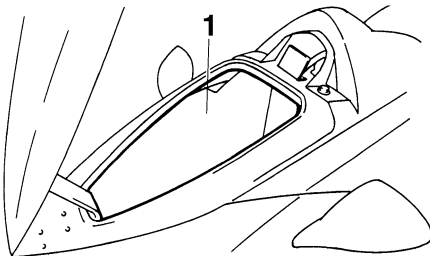
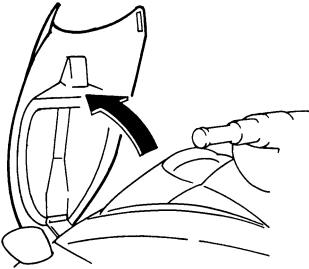
## Front storage compartment

The front storage compartment is located at the bow.

To open the front storage compartment, pull the hood latch up, and then lift up the hood.



1 Hood latch



1 Front storage compartment

Front storage compartment:

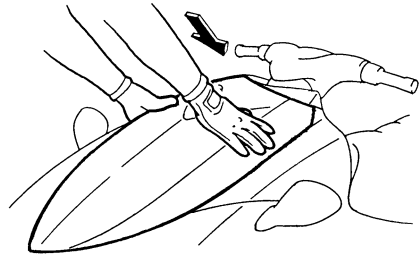
Capacity:

62.0 L (16.4 US gal, 13.6 Imp.gal)

Load limit:

5.0 kg (11 lb)

To close the front storage compartment, push down on the rear of the hood until it latches securely.



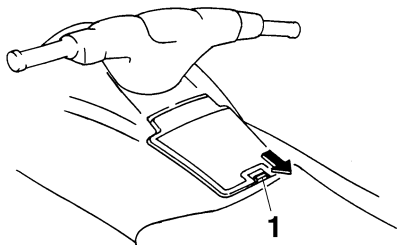
EJU31753

## Glove compartment

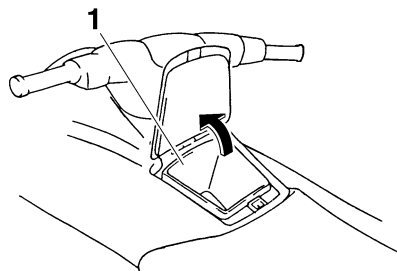
The glove compartment is located in front of the seat.

# Features and functions

To open the glove compartment, slide the glove compartment latch toward you, and then lift up the lid.



1 Glove compartment latch



1 Glove compartment

Glove compartment:  
Capacity:  
5.2 L (1.4 US gal, 1.1 Imp.gal)  
Load limit:  
1.0 kg (2 lb)

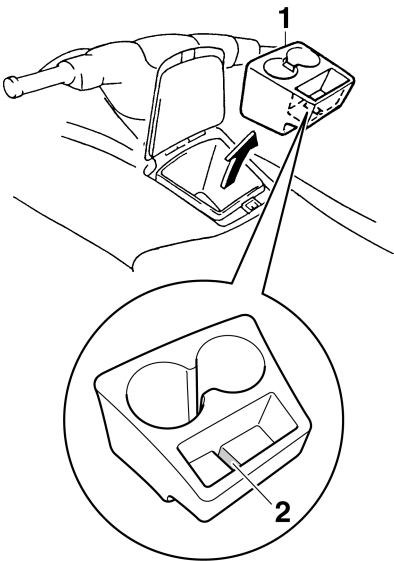
To close the glove compartment, push the lid down until it latches securely.

**For VX Deluxe/VX Cruiser:**

A removable beverage holder, which includes a transmitter holder, is provided in the glove compartment.

Do not place beverages in the beverage holder when operating the watercraft.

Keep the remote control transmitter in the transmitter holder when operating the watercraft.



1 Beverage holder  
2 Transmitter holder



EJU31821

## Fuel and oil

EJU37162

### Fuel

EWJ00282

#### **WARNING**

- **Gasoline and gasoline vapors are extremely flammable. To avoid fires and explosions and to reduce the risk of injury when refueling, follow these instructions.**
- **Gasoline is poisonous and can cause injury or death. Handle gasoline with care. Never siphon gasoline by mouth. If you should swallow some gasoline, inhale a lot of gasoline vapor, or get some gasoline in your eyes, see your doctor immediately. If gasoline spills on your skin, wash with soap and water. If gasoline spills on your clothing, change your clothes.**

ECJ00321

#### **NOTICE**

- **Do not use leaded gasoline. Leaded gasoline can seriously damage the engine.**
- **Avoid getting water and contaminants in the fuel tank. Contaminated fuel can cause poor performance and engine damage. Use only fresh gasoline that has been stored in clean containers.**

Recommended fuel:

Regular unleaded gasoline with a minimum octane rating of

86

(Pump octane number) =  $(R + M)/2$

90 (Research octane number)

fuel meets the minimum octane ratings. E-85 is a fuel blend containing 85% ethanol and therefore must not be used in this watercraft. All ethanol blends containing more than 10% ethanol can cause fuel system damage or engine performance problems.

Yamaha does not recommend gasohol containing methanol because it can cause fuel system damage and engine performance problems.

To fill the fuel tank:

- (1) Before refueling, turn off the engine. Do not stand or sit on the watercraft. Never refuel while smoking, or while in the vicinity of sparks, open flames, or other sources of ignition.
- (2) Place the watercraft in a well-ventilated area and in a horizontal position.
- (3) Remove the seat, and then check the fuel level. (See page 29 for seat removal and installation procedures.)
- (4) Remove the fuel tank filler cap, and then slowly add fuel to the fuel tank. Stop filling when the fuel level reaches approximately 50 mm (2 in) from the top of the fuel tank. Do not overfill the fuel tank. Because fuel expands when it heats up, heat from the engine or the sun can cause fuel to spill out of the fuel tank. Do not leave the watercraft with a full tank in direct sunlight.

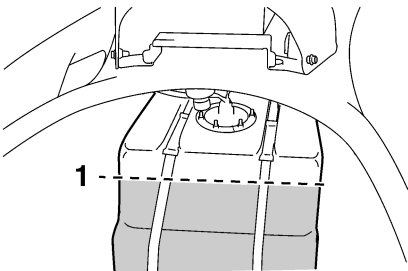
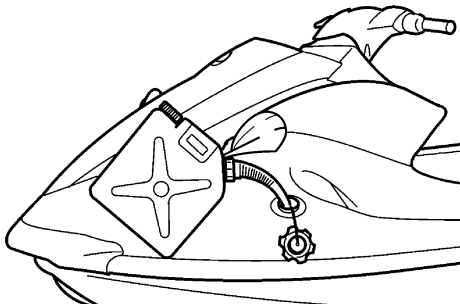
## Gasohol

There are two types of gasohol: gasohol containing ethanol and that containing methanol. Gasohol containing ethanol can be used if ethanol content does not exceed 10% and the

# Operation

Fuel tank capacity:  
60 L (15.9 US gal, 13.2 Imp.gal)

for engine oil level checking procedures.) Use a combination of the recommended SAE and API engine oil classifications shown in the chart below.



- 1 Approximately 50 mm (2 in) from top of the fuel tank
- (5) Wipe up any spilled fuel immediately.
- (6) Install the fuel tank filler cap. Make sure that the fuel tank filler cap is securely closed before operating the watercraft.
- (7) Install the seat. Make sure that the seat is securely installed before operating the watercraft.

| SAE    |    |    |        | API                              |
|--------|----|----|--------|----------------------------------|
| -4     | 32 | 68 | 104 °F | SE<br>SF<br>SG<br>SH<br>SJ<br>SL |
| -20    | 0  | 20 | 40 °C  |                                  |
| 10W-30 |    |    |        |                                  |
| 20W-40 |    |    |        |                                  |
| 20W-50 |    |    |        |                                  |

EJU31891

## Engine oil

ECJ00281

### NOTICE

**Use only 4-stroke engine oil. Usage of 2-stroke engine oil could result in severe engine damage.**

Make sure that the engine oil is at the specified level. Add oil as necessary. (See page 48

EJU31980

## Pre-operation checks

EJU31991

### Pre-operation check list

Before operating this watercraft, perform the checks in the following check list.

EWJ00411



**Failure to inspect or maintain the watercraft properly increases the possibility of an accident or damage to the watercraft. Do not operate the watercraft if you find any problem. If a problem cannot be corrected by the procedures provided in this manual, have the watercraft inspected by a Yamaha dealer.**

| ITEM                                                | ROUTINE                                                                                                      | PAGE   |
|-----------------------------------------------------|--------------------------------------------------------------------------------------------------------------|--------|
| BEFORE LAUNCH OR OPERATION                          |                                                                                                              |        |
| Engine compartment                                  | Remove the seat to ventilate the engine compartment. Check for fuel vapors and loose electrical connections. | 48     |
| Bilge                                               | Check for water and fuel and drain if necessary.                                                             | 49     |
| Stern drain plugs                                   | Check for proper installation.                                                                               | 50     |
| Throttle lever                                      | Check that the throttle lever springs back smoothly.                                                         | 51     |
| Steering system                                     | Check for proper operation.                                                                                  | 51     |
| Shift lever and reverse gate (VX Deluxe/VX Cruiser) | Check for proper operation.                                                                                  | 51     |
| Fuel and oil                                        | Check the fuel and oil levels and replenish if necessary.<br>Check the hoses and tanks for leakage.          | 48, 48 |
| Water separator                                     | Check for water and drain if necessary.                                                                      | 49     |
| Battery                                             | Check the electrolyte level and battery condition.                                                           | 50     |
| Hood                                                | Check that the hood is securely closed.                                                                      | 29     |
| Seat                                                | Check that the seat is securely installed.                                                                   | 29     |
| Hull and deck                                       | Check the hull and deck for cracks and other damage.                                                         | 48     |
| Jet intake                                          | Check for debris and remove if necessary.                                                                    | 52     |
| Fire extinguisher                                   | Check the condition and replace if necessary.                                                                | 50     |
| Engine shut-off cord (lanyard)                      | Check the condition and replace if frayed or broken.                                                         | 52     |
| Switches                                            | Check the start switch, engine stop switch, and engine shut-off switch for proper operation.                 | 52     |
| AFTER LAUNCH                                        |                                                                                                              |        |
| Cooling water pilot outlet                          | Check that water is discharged while the engine is running and the watercraft is in the water.               | 53     |
| Multifunction information center                    | Check for warning indications and proper operation.                                                          | 53     |

# Operation

---

**TIP:**

Pre-operation checks should be made each time the watercraft is used. These checks can be completed in a short time. It is worth the time spent to ensure safety and reliability.

EJU32280

## Pre-operation check points

EJU32311

### Engine compartment

EWJ00460

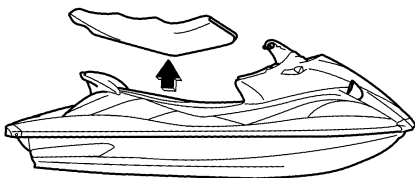
#### **WARNING**

**Failure to ventilate the engine compartment could result in a fire or explosion. Do not start the engine if there is a fuel leak or a loose electrical connection.**

Ventilate the engine compartment before each use.

To ventilate the engine compartment, remove the seat. (See page 29 for seat removal and installation procedures.) Leave the engine compartment open for a few minutes to allow any fuel vapors to escape.

While the engine compartment is open, check for loose electrical connections.



EJU32350

### Hull and deck

Check the hull and deck for cracks and other damage. If any damage is found, have a Yamaha dealer repair the watercraft.

EJU32391

### Fuel level

Make sure that there is sufficient fuel in the fuel tank before each use.

Also, check the fuel system for leakage, cracks, and malfunctions. (See page 74 for check points and correct procedures.)

- (1) Remove the fuel tank filler cap to release any pressure that might have built up in the fuel tank.
- (2) Remove the seat. (See page 29 for seat removal and installation procedures.)
- (3) Check the fuel level in the fuel tank and replenish if necessary. (See page 44 for filling procedures.)
- (4) Install the fuel tank filler cap and the seat.

EJU32401

### Engine oil level

Check the engine oil level before each use.

EWJ00340

#### **WARNING**

**Engine oil is extremely hot immediately after the engine is turned off. Coming in contact with or getting any engine oil on your clothes could result in burns.**

ECJ00391

#### **NOTICE**

- Do not run the engine with too much or not enough oil in the oil tank, otherwise the engine could be damaged.
- Make sure that debris and water do not enter the oil tank filler hole. Debris and water in the engine oil can cause serious engine damage.

To check the engine oil level:

- (1) Place the watercraft in a horizontal position or launch the watercraft, and then start the engine. **NOTICE: When checking the engine oil level on land, supply water to the cooling water passages. (See page 68 for procedures on supplying water.)** [ECJ01020]

#### **TIP:**

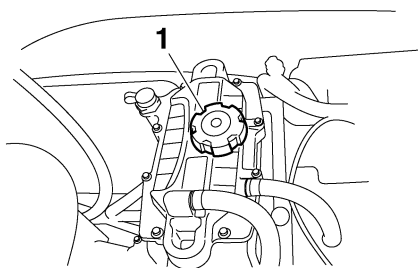
When checking the engine oil level on water, moor the watercraft so that it will not drift away.

- (2) Run the engine at trolling speed for 6 minutes or more, and then stop the engine.

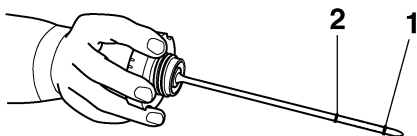
# Operation

Run the engine an additional 5 minutes if the ambient temperature is 20 °C (68 °F) or less.

- (3) Remove the seat. (See page 29 for seat removal and installation procedures.)
- (4) Remove the oil tank filler cap, wipe the dipstick clean, and then screw the filler cap into the filler hole completely. Remove the filler cap again and check that the engine oil level is between the minimum and maximum level marks on the dipstick.



1 Oil tank filler cap



- 1 Minimum level mark
- 2 Maximum level mark

- (5) If the engine oil level is below the minimum level mark, add enough oil so that the oil level is between the minimum and maximum level marks on the dipstick, and then install the filler cap. If the engine oil level is significantly above the maxi-

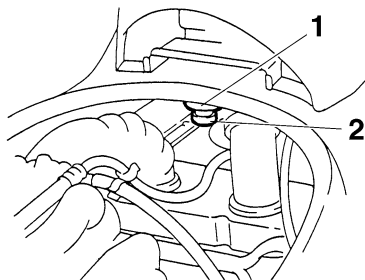
mum level mark, the oil tank is overfilled. Have a Yamaha dealer remove the excessive amount of engine oil.

- (6) Install the seat.

EJU32420

## Water separator

Check the water separator for water. The water separator retains any water that may have entered through the fuel tank breather hose if the watercraft was capsized. Normally, the water separator is empty.



- 1 Water separator
- 2 Drain screw

If water remains in the water separator, drain it by removing the drain screw. Place a drain pan under the water separator to catch the draining water or use a dry cloth to soak up any water that could spill into the watercraft. If any water spills into the watercraft, be sure to wipe it up with a dry cloth. Also, be sure to install the drain screw after draining the water separator.

EJU32462

## Bilge

Check the bilge for moisture and fuel residue.

**NOTICE: Excessive water in the engine compartment can splash into the engine, which can result in severe damage.** [ECJ00341]

To drain water from the bilge:

- (1) Remove the stern drain plugs.
- (2) Raise the bow of the watercraft until the water drains.

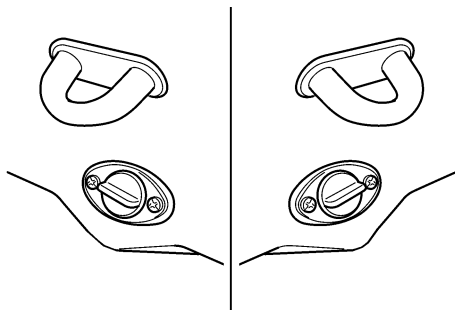
- (3) After the water has drained, wipe the bilge with dry rags to make sure that it is thoroughly dry.
- (4) Install the stern drain plugs. **NOTICE:** Before installing the stern drain plugs, clean the drain plug threads to remove any foreign materials, such as dirt or sand. Otherwise, the stern drain plugs could be damaged, allowing water to enter the engine compartment. Make sure that the stern drain plugs are tightened securely before launching the watercraft. Otherwise, water may flood the engine compartment and cause the watercraft to submerge.

[ECJ00361]

EJU32472

## Stern drain plugs

Check the stern drain plugs for proper installation.



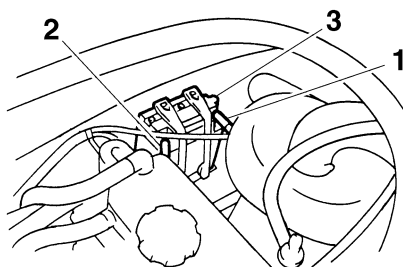
EJU32482

## Battery

Check the battery electrolyte level and check that the battery has sufficient power to start the engine easily. **WARNING! Never operate the watercraft if the battery does not have sufficient power to start the engine or if it shows any other signs of decreased power. Loss of battery power may leave you stranded.** [EWJ01240]

Recharge the battery or replace it if it is not in good condition. (See page 78 for battery recharging procedures.)

Also, check that the battery leads are tightened securely and that there is no corrosion on the battery terminals. Check that the breather hose is securely connected to the battery and that it is not pinched. **WARNING! Fire or explosion could result if the breather hose is damaged, obstructed, or not connected properly.** [EWJ00451]



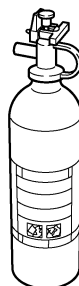
- 1 Positive (+) battery terminal: Red lead
- 2 Negative (-) battery terminal: Black lead
- 3 Breather hose

Make sure that the battery is securely held in place.

EJU32531

## Fire extinguisher

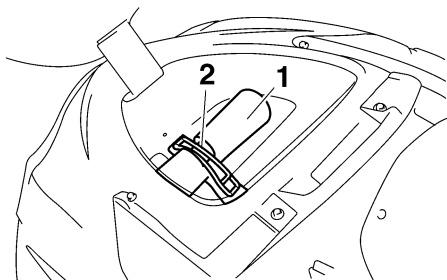
Check that there is a full fire extinguisher on board.



The fire extinguisher holder and cover are located in the front storage compartment.

# Operation

To store the fire extinguisher, unhook the band and remove the cover. Place the fire extinguisher in the holder, and then place the cover over the fire extinguisher. Fasten the cover and the fire extinguisher with the band securely.



- 1 Fire extinguisher holder and cover
- 2 Band

To check the fire extinguisher, see the instructions supplied by the fire extinguisher manufacturer. Always keep the fire extinguisher secured in the holder with its cover in place.

Always carry a fire extinguisher on board. A fire extinguisher is not standard equipment with this watercraft. If you do not have one, contact a Yamaha dealer or a fire extinguisher dealer to obtain one meeting the proper specifications.

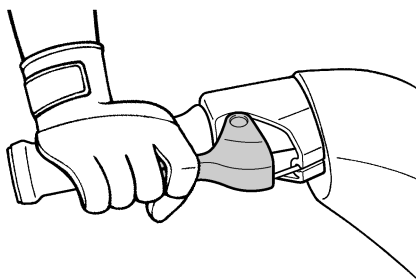
Fire extinguisher:  
Classification:  
B-1  
Capacity:  
2 lb or more

EJU32591

## Throttle lever

Check the throttle lever for proper operation. Squeeze and release the throttle lever several times to make sure that there is no hesitation in its travel. It should be smooth over the com-

plete range and spring back to the idle position when released.

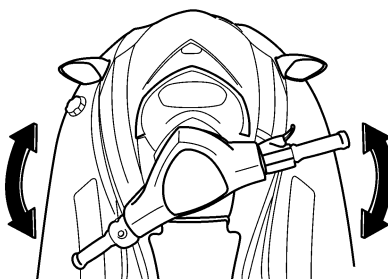


EJU32600

## Steering system

Check the handlebars for looseness.

Turn the handlebars as far as possible to the right and left to make sure that operation is smooth and unrestricted throughout the whole range. Also, make sure that the jet thrust nozzle moves as the handlebars are turned, and that there is no free play between the handlebars and the jet thrust nozzle.



EJU32632

## Shift lever and reverse gate (for VX Deluxe/VX Cruiser)

EWJ00031

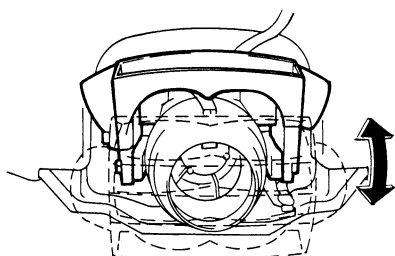
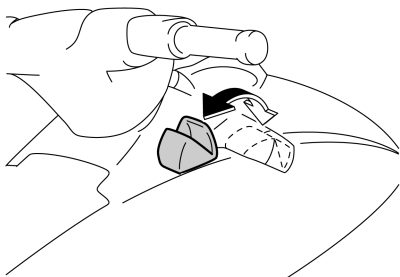


**Do not touch the reverse gate while the shift lever is being operated, otherwise you could be pinched.**

Check the shift lever and reverse gate for proper operation.



Make sure that the reverse gate goes down completely when the shift lever is pulled up. Also, make sure that the reverse gate goes up completely when the shift lever is pushed down.



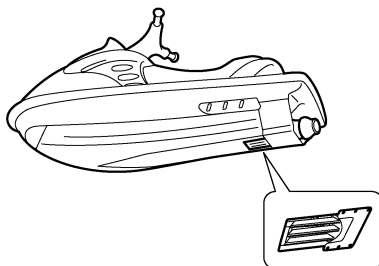
EJU32651

## Jet intake

Carefully check the jet intake for weeds, debris, or anything else that might restrict the intake of water. If the jet intake is clogged, clean it. (See page 84 for jet intake cleaning procedures.)

If the watercraft is operated while the jet intake is clogged, cavitation could occur, reducing jet thrust, and possibly damaging the jet pump. In some cases, the engine may overheat because of lack of cooling water, and

damage to the engine could result. Cooling water is fed to the engine by the jet pump.

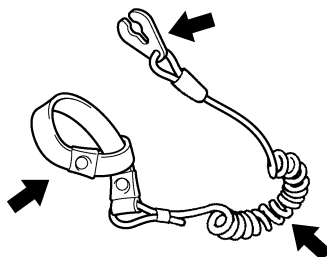


EJU32661

## Engine shut-off cord (lanyard)

Check that the engine shut-off cord (lanyard) is not frayed or broken. If the cord is damaged, replace it. **WARNING! Never try to repair the engine shut-off cord (lanyard) or tie it together. The engine shut-off cord (lanyard) may not pull free when the operator falls off, allowing the watercraft to continue to run and cause an accident.**

[EWJ01220]



EJU32671

## Switches

ECJ00410

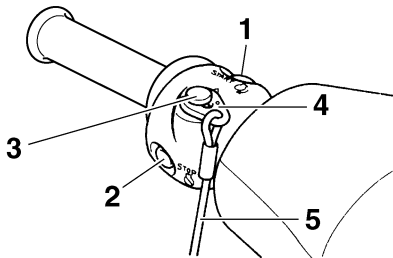
### NOTICE

**Do not run the engine for more than 15 seconds when checking the switches on land without supplying water, otherwise the engine could overheat.**

# Operation

Check the start switch, the engine stop switch, and the engine shut-off switch for proper operation.

Push the start switch to start the engine. As soon as the engine starts running, push the engine stop switch to verify that the engine stops immediately. Restart the engine, and then pull the engine shut-off cord (lanyard) to remove the clip from the engine shut-off switch to verify that the engine stops immediately. (See pages 31 to 32 for information on proper operation of the start switch, the engine stop switch, and the engine shut-off switch.)



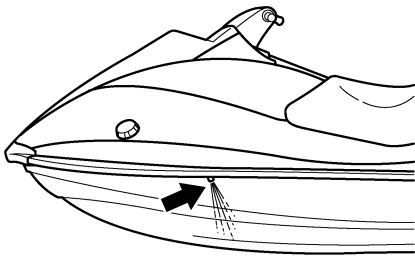
- 1 Start switch
- 2 Engine stop switch
- 3 Engine shut-off switch
- 4 Clip
- 5 Engine shut-off cord (lanyard)

EJU32680

## Cooling water pilot outlet

Check that water comes out from the cooling water pilot outlet while the engine is running

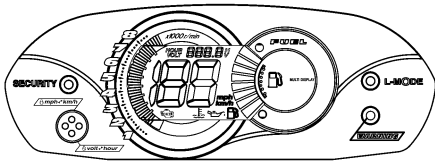
and the watercraft is in the water. (See page 32 for more information.)



EJU32711

## Multifunction information center

Check the multifunction information center for proper operation while the watercraft is in the water. (See page 37 for information on proper operation of the multifunction information center.)



EJU32742

## Operation

EWJ00510

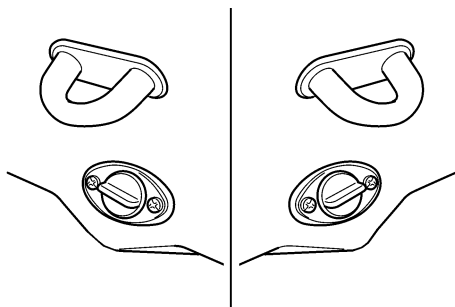
### **WARNING**

**Before operating your watercraft, become familiar with all of the controls. Consult a Yamaha dealer about any control or function that you do not fully understand. Failure to understand how the controls work could cause an accident or prevent you from avoiding an accident.**

ECJ00460

### **NOTICE**

**Make sure that the stern drain plugs are tightened securely before launching the watercraft.**



EJU32782

### **Engine break-in**

ECJ00430

### **NOTICE**

**Failure to follow the engine break-in procedure could result in reduced engine life or even severe engine damage.**

The engine break-in period is essential to allow the various components of the engine to wear and polish themselves to the correct operating clearances. This ensures proper performance and promotes longer component life.

### **TIP:**

Be sure to check the engine oil level before operating the watercraft for the first time. (See page 48 for engine oil checking procedures.)

- (1) Launch the watercraft and start the engine. (See page 54 for engine starting procedures.)
- (2) For the first 5 minutes, run the engine at trolling speed only. For the 30 minutes of operation after that, keep the engine speed below 5000 r/min. For the 1 hour of operation after that, keep the engine speed below 6500 r/min.
- (3) Proceed with normal operation.

EJU32812

### **Launching the watercraft**

When launching the watercraft, make sure that there are no obstacles around you.

If there are waves, someone should make sure that the watercraft is not pushed into the trailer after launching the watercraft.

#### ● For VX Deluxe/VX Cruiser:

Use the remote control transmitter to select the unlock mode. (See page 35 for Yamaha Security System lock and unlock mode selection procedures.)

After the watercraft is in the water, start the engine. Shift into reverse and move the watercraft back slowly.

#### ● For VX/VX Sport:

After the watercraft is in the water, turn it around so that the bow faces the direction you wish to go. Start the engine, and then slowly move away from the launching area.

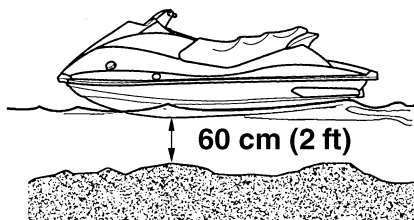
EJU32852

### **Starting the engine**

- (1) If the lock mode of the Yamaha Security System is selected (for VX Deluxe/VX Cruiser), use the remote control transmitter to select the unlock mode. (See page 35 for Yamaha Security System lock and unlock mode selection procedures.)

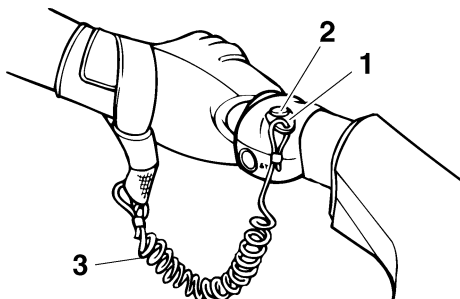
# Operation

- (2) Launch the watercraft in water free from weeds and debris and at least 60 cm (2 ft) deep from the bottom of the watercraft. **NOTICE:** Never operate in water that is less than 60 cm (2 ft) deep from the bottom of the watercraft, otherwise pebbles or sand could be sucked into the jet intake, causing impeller damage and engine overheating. [ECJ00471]



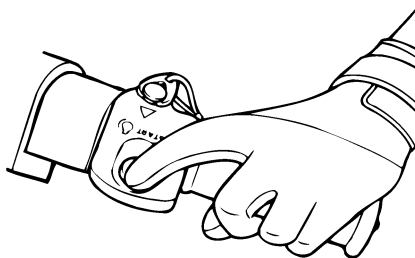
- (3) Attach the engine shut-off cord (lanyard) to your left wrist, and then attach the clip to the engine shut-off switch. It is not possible to start the engine with the clip removed from the engine shut-off switch. **WARNING!** Check that the engine shut-off cord (lanyard) is attached correctly. If the engine shut-off cord (lanyard) is not attached correctly, it may not pull free when the operator falls

off, allowing the watercraft to continue to run and cause an accident. [EWJ00581]



- 1 Clip
- 2 Engine shut-off switch
- 3 Engine shut-off cord (lanyard)

- (4) Push the start switch (green button), and then release it as soon as the engine starts to run. If the engine does not start in 5 seconds, release the start switch, wait 15 seconds, and then try again. The engine will not start if the throttle lever is squeezed. **NOTICE:** Never push the start switch while the engine is running. Do not operate the start switch for more than 5 seconds, otherwise the battery will be discharged and the engine will not start. Also, the starter motor could be damaged. [ECJ01040]

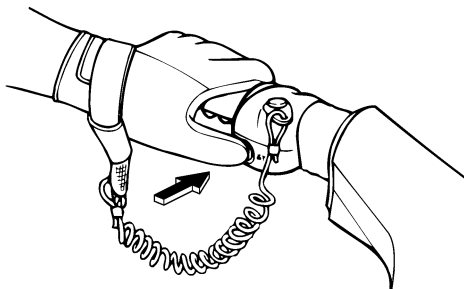


EJU32861

## Stopping the engine

To stop the engine, release the throttle lever, and then push the engine stop switch (red

button). **WARNING!** You need throttle to steer. Shutting the engine off can cause you to hit an obstacle you are attempting to avoid. A collision could result in severe injury or death. [EWJ00601]



EJU37181

## Shifting (for VX Deluxe/VX Cruiser)

EWJ01230

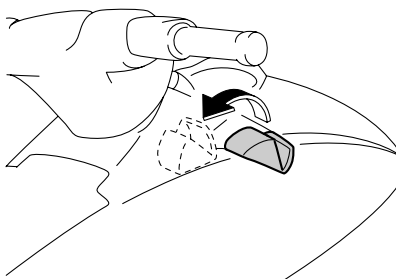
### **WARNING**

- Do not use the reverse function to slow down or stop the watercraft as it could cause you to lose control, be ejected, or impact the handlebars.
- Make sure that there are no obstacles or people behind you before shifting into reverse.
- Do not touch the reverse gate while the shift lever is being operated, otherwise you could be pinched.

To shift into reverse:

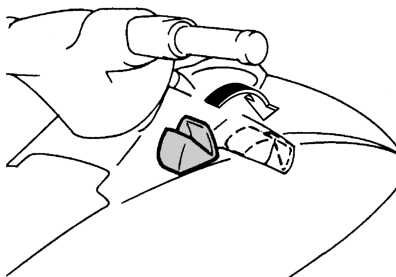
- (1) Release the throttle lever and let the engine speed return to idle.

- (2) Pull the shift lever toward you.



To shift into forward:

- (1) Release the throttle lever and let the engine speed return to idle.
- (2) Push the shift lever away from you.



EJU32892

## Leaving the watercraft

If leaving the watercraft, select the lock mode of the Yamaha Security System (for VX Deluxe/VX Cruiser) and remove the engine shut-off cord (lanyard) to reduce the chance of accidental starting or unauthorized use by children or others. (See page 35 for Yamaha Security System lock and unlock mode selection procedures.)

# Operation

EJU32901

## Operating your watercraft

EJU32952

### Getting to know your watercraft

Operating your watercraft requires skills acquired through practice over a period of time. Take the time to learn the basic techniques well before attempting more difficult maneuvers.

Operating your new watercraft can be a very enjoyable activity, providing you with hours of pleasure. However, it is essential to familiarize yourself with the operation of the watercraft to achieve the skill level necessary to enjoy riding safely.

Before operating this watercraft, read this owner's/operator's manual, the Riding Practice Guide, the Riding Instruction card, and all labels on the watercraft. Pay particular attention to the safety information on page 9. Also, watch the Basic Orientation Video provided with your watercraft. These materials should give you an understanding of the watercraft and its operation.

Remember: This watercraft is designed to carry the operator and up to 2 passengers. Never exceed the maximum load limit or allow more than 3 persons (or 2 persons if a water-skier is being pulled) to ride the watercraft at any time.

Maximum load:

240 kg (530 lb)

Load is the total weight of cargo, operator, and passengers.

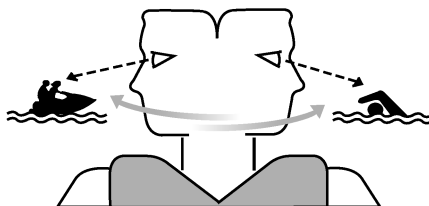
EJU32991

### Learning to operate your watercraft

Before operating the watercraft, always perform the pre-operation checks listed on page 46. The short time spent checking the watercraft will reward you with added safety and reliability.

Check state and local laws before operating your watercraft.

Operate defensively at safe speeds and keep a safe distance away from people, objects, and other watercraft. Select a wide area to learn in, where there is good visibility and light boat traffic.



Use the buddy system—operate with someone nearby. Scan constantly for people, objects, and other watercraft. Be alert for conditions that limit your visibility or block your vision of others.

Attach the engine shut-off cord (lanyard) to your left wrist and keep it free from the handlebars so that the engine stops if you, the operator, fall off.

Wear a personal flotation device (PFD). All riders must wear a U.S. Coast Guard approved PFD that is suitable for personal watercraft use.

Wear protective clothing. Severe internal injuries can occur if water is forced into body cavities as a result of falling into the water or being near the jet thrust nozzle. Normal swimwear does not adequately protect against forceful water entry into the rectum and vagina. All riders must wear a wetsuit bottom or clothing that provides equivalent protection.

Such clothing includes thick, tightly woven, sturdy and snug-fitting apparel such as denim, but does not include spandex or similar

fabrics, like those used in bicycle shorts. A full wetsuit can also protect against hypothermia (subnormal body temperature) and abrasions.

Footwear and gloves are recommended.

Eye protection is recommended to keep wind, water, and glare from the sun out of your eyes while you operate your watercraft. Restraining straps for eyewear are made which are designed to float should your eyewear fall in the water.

You should grip the handlebars firmly and keep both feet on the floor of the footwell. Do not attempt to ride with passengers until your operating skills are fully developed.

EJU33051

## Riding with passengers

EWJ00541

### **WARNING**

- **Do not apply throttle when anyone is at the rear of the watercraft. Turn the engine off or keep it at idle. Water and debris exiting the jet thrust nozzle can cause severe injury. Passengers should not attempt to board the watercraft if the operator is applying throttle.**
- **When passengers are on board, make sure that they are holding on firmly and have their feet on the floor of the footwell before you start to accelerate.**

When 2 or 3 persons (including the operator) are on board, the watercraft handles differently, and is not as easy to maneuver, therefore operating it requires a higher degree of skill. Before attempting to operate the watercraft with passengers on board, the operator must practice operating the watercraft alone enough to be able to acquire the necessary skills.

The passengers must always wear a U.S. Coast Guard approved PFD and a wetsuit bottom or equivalent.

Do not give a ride to children whose feet cannot reach the floor of the footwell. The passengers should hold on firmly, either to the person in front of them or to the handgrip provided, and keep their feet on the floor of the footwell. Never allow a passenger to ride in front of the operator.

When pulling a water-skier, the spotter should face to the rear while holding the handgrip with both hands. The spotter should always sit astride the seat with both feet placed firmly on the floor of the footwell for proper balance. Follow state laws regarding water-skiing, such as those for skier-down flags, rearward-facing spotter, and other requirements.

EJU33081

## Starting the watercraft

EWJ00711

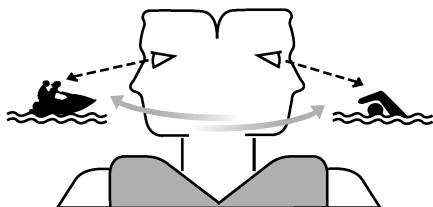
### **WARNING**

**To avoid collisions:**

- **Scan constantly for people, objects, and other watercraft. Be alert for conditions that limit your visibility or block your vision of others.**
- **Operate defensively at safe speeds and keep a safe distance away from people, objects, and other watercraft.**
- **Do not follow directly behind watercraft or other boats. Do not go near others to spray or splash them with water. Avoid sharp turns or other maneuvers that make it hard for others to avoid you or understand where you are going. Avoid areas with submerged objects or shallow water.**
- **Take early action to avoid collisions. Remember, watercraft and other boats do not have brakes. Do not release the**

# Operation

throttle lever when trying to steer away from objects—you need throttle to steer.

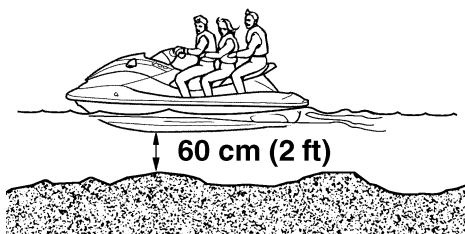


EJU33092

## Boarding and starting in shallow water

- (1) Launch the watercraft in water free from weeds and debris and at least 60 cm (2 ft) deep from the bottom of the watercraft.

**NOTICE:** Never operate in water that is less than 60 cm (2 ft) deep from the bottom of the watercraft, otherwise pebbles or sand could be sucked into the jet intake, causing impeller damage and engine overheating. [ECJ00471]



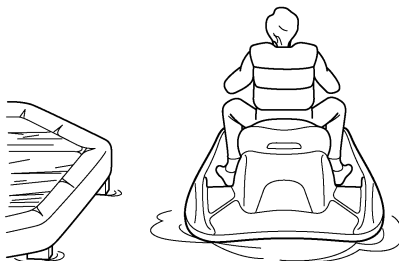
- (2) Board the watercraft from the side or the rear.
- (3) Attach the engine shut-off cord (lanyard) to your left wrist, and then attach the clip to the engine shut-off switch.
- (4) Grip the handlebars with both hands, place both feet on the floor of the footwell,

start the engine, and then look in all directions before starting off.

EJU33111

## Boarding and starting from a dock

- (1) Board the watercraft from the side.
- (2) Attach the engine shut-off cord (lanyard) to your left wrist, and then attach the clip to the engine shut-off switch.
- (3) Push the watercraft away from the dock, grip the handlebars with both hands, place both feet on the floor of the footwell, start the engine, and then look in all directions before starting off.



EJU36081

## Boarding and starting in deep water

EWJ01111

### **WARNING**

Be sure the operator and any passengers have practiced boarding from the water while still close to shore before riding. A person who has made many unsuccessful attempts to get back on the watercraft may become fatigued and suffer from exposure, increasing the risk of injury and drowning.

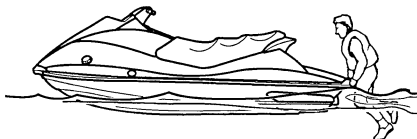
Boarding in deep water requires more skill. The operator and passengers should practice boarding in shallow water before riding in deep water.



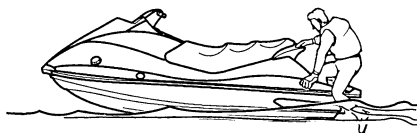
EJU35231

## Boarding alone

- (1) Swim to the rear of the watercraft and place both hands on the boarding platform, pull yourself up, and then grasp the handgrip with one hand.



- (2) Pull yourself up to a kneeling position on the platform, and then move to the seat and sit astride.



- (3) Attach the engine shut-off cord (lanyard) to your left wrist, and then attach the clip to the engine shut-off switch.
- (4) Grip the handlebars with both hands, place both feet on the floor of the footwell,

start the engine, and then look in all directions before starting off.



### TIP:

If your watercraft is equipped with the reboarding step (for VX Cruiser), you can lower the step to make reboarding easier. The step returns automatically to the up position after you have boarded.

EJU33164

## Boarding with passengers

EWJ00660

### WARNING

Severe internal injuries can occur if water is forced into body cavities as a result of being near the jet thrust nozzle. Do not apply throttle until the passengers are seated with their feet on the floor of the footwell and are securely holding on to the person in front of them or to the handgrip provided.

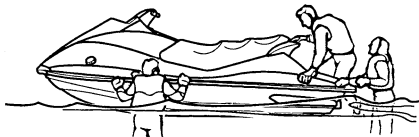
### TIP:

The heavier the total weight of the operator and passengers, the more difficult it will be to balance the watercraft. Do not operate the watercraft when the total weight exceeds 240 kg (530 lb) including any cargo.

# Operation

---

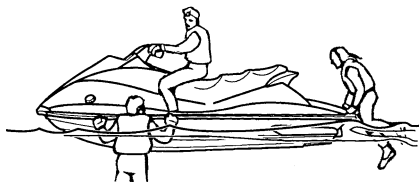
- (1) Climb on board as noted in the previous section, and sit astride the seat.



both the passengers and the operator should try to balance the watercraft.



- (2) Attach the engine shut-off cord (lanyard) to your left wrist, and then attach the clip to the engine shut-off switch.
- (3) Have the passengers move to the rear of the watercraft.



- (5) Check that the passengers have their feet on the floor of the footwell and are securely holding on to the person in front of them or to the handgrip provided. Never allow a passenger to ride in front of the operator.



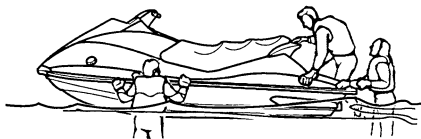
- (4) Have a passenger board and sit astride the seat. If a second passenger is boarding, have him or her follow the same procedure. When a passenger is boarding,

- (6) Start the engine, look in all directions, and then accelerate to planing speed.

To board when it is difficult to balance the watercraft at a standstill:

- (1) While the passengers are steadying the watercraft, pull yourself up onto the boarding platform into a kneeling posi-

tion, and then move to the seat and sit astride to balance the watercraft.



(6) Gradually increase the speed to balance the watercraft.



- (2) Have a passenger pull him or herself up onto the boarding platform into a kneeling position, then move to the seat and sit astride to balance the watercraft.
- (3) Attach the engine shut-off cord (lanyard) to your left wrist, and then attach the clip to the engine shut-off switch.
- (4) Start the engine and keep it at idle.
- (5) Have the second passenger pull him or herself up onto the boarding platform into a kneeling position, then crawl onto the seat as the watercraft accelerates.



EJU33231

## Capsized watercraft

EWJ00671

### **WARNING**

**Improper uprighting can cause injury.**

- **Be sure to shut the engine off by pulling on the engine shut-off cord (lanyard) to remove the clip from the engine shut-off switch.**
- **Do not put your hands in the intake grate.**

If the watercraft capsizes, turn it over immediately.

Be sure to carefully follow the procedures below to prevent injury, or damage to the watercraft.

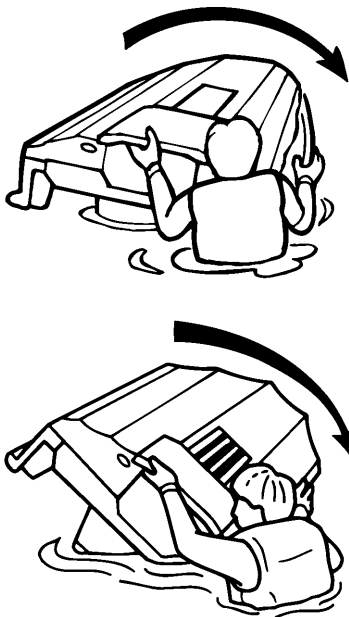
- (1) Remove the clip from the engine shut-off switch.
- (2) Swim to the rear of the watercraft. Pull the watercraft over with your left hand on the ride plate while pushing down on the gunwale with your right hand or foot.

If the port (left) side of the capsized watercraft is tilting up, push down on the gunwale so that the port (left) side is down before turning the watercraft clockwise. **NOTICE: Do not turn the watercraft over counterclockwise, otherwise water can enter the engine,**

# Operation

which can result in severe damage.

[ECJ00541]



- (3) Start the engine and operate the watercraft as straight as possible and above planing speed for at least 2 minutes to discharge any water remaining in the engine compartment. (If the engine does not start, see “Towing the watercraft” on page 86 or “Submerged watercraft” on page 86.) **NOTICE: Do not operate the engine at full throttle for at least 1 minute after the engine has been restarted. Excessive water in the engine compartment can splash into the engine, which can result in severe damage.** [ECJ00551]

EJU33251

## Turning the watercraft

EWJ00770



- Do not release the throttle lever when trying to steer away from objects—you

need throttle to steer. A collision could result in severe injury or death.

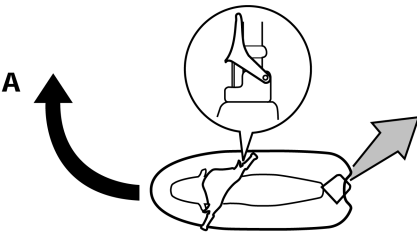
- When operating at higher speeds, make gradual turns or slow down before turning. Sharp high-speed turns may cause the watercraft to slide sideways or spin, throwing the operator and passengers overboard, which could cause an injury.

Steering control depends on the combination of handlebar position and the amount of throttle.

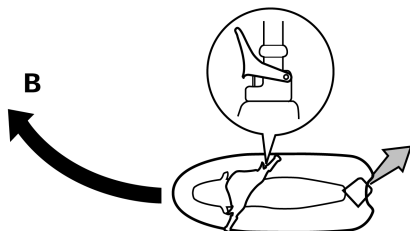
Water sucked in through the intake grate is pressurized by the impeller in the jet pump. As the pressurized water is expelled from the pump through the jet thrust nozzle, it creates thrust to move and steer the watercraft. The higher the engine speed, the more thrust produced.

The amount of jet thrust, in addition to the position of the handlebars, determines how sharply you turn.

- A. More throttle produces higher thrust, so the watercraft will turn more sharply.

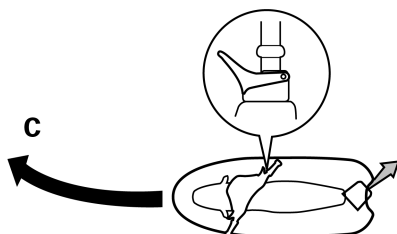


- B. Less throttle produces lower thrust, so the watercraft will turn more gradually.

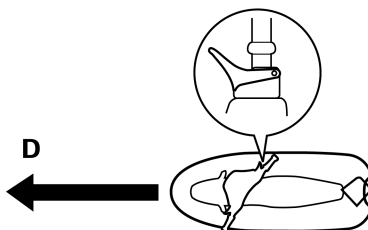


- C. Releasing the throttle lever completely produces only minimum thrust. If you are traveling at speeds above trolling, you will have rapidly decreasing ability to steer without throttle. You may still have some turning ability immediately after releasing the throttle lever, but once the engine slows down, the watercraft will no longer respond to handlebar input until you apply throttle again or you reach trolling speed.

At trolling speed, the watercraft can be turned gradually by handlebar position alone using just the amount of thrust available at idle.



- D. If the engine is stopped while riding, there is no thrust. The watercraft will go straight even though the handlebars are turned.



## You need throttle to steer.

This model is equipped with the Yamaha Engine Management System (YEMS) that includes an off-throttle steering (OTS) system. It will activate at planing speeds should you attempt to steer the watercraft after releasing the throttle lever (see condition C above).

The OTS system assists in turning by continuing to supply some thrust while the watercraft is decelerating, but you can turn more sharply if you apply throttle while turning the handlebars. The OTS system does not function below planing speeds or when the engine is off. Once the engine slows down, the watercraft will no longer turn in response to handlebar input until you apply throttle again or you reach trolling speed.

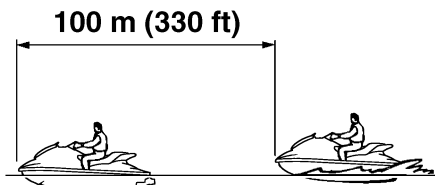
EJU33280

## Stopping the watercraft

The watercraft is not equipped with a separate braking system. It is stopped by water resistance when the throttle lever is released. From full speed, the watercraft comes to a complete stop in approximately 100 m (330 ft) after the throttle lever is released or the engine is stopped, although this distance will vary depending on many factors, including gross weight, water surface conditions, and wind direction.

# Operation

The watercraft slows down as soon as the throttle lever is released, but will coast for a distance before fully stopping. If you are not sure you can stop in time before hitting an obstacle, apply throttle and turn in another direction.



EWJ00730

## WARNING

- Allow adequate stopping distance.
- Take early action to avoid collisions. Remember, watercraft and other boats do not have brakes.
- Operate defensively at safe speeds and keep a safe distance away from people, objects, and other watercraft to give you time to stop.
- Do not shut the engine off when slowing down in case you need engine power to steer away from a boat or other obstacle that comes into your path.
- For VX Deluxe/VX Cruiser:  
Do not use the reverse function to slow down or stop the watercraft as it could cause you to lose control, be ejected, or impact the handlebars.

EJU35961

## Beaching the watercraft

- (1) Make sure that there are no boats, swimmers, or obstacles near the beach. Release the throttle lever about 100 m (330

ft) before you reach the intended beaching area.

- (2) Approach the beach slowly and stop the engine before reaching land. Remember, you need throttle to steer.
- (3) Get off the watercraft and pull it up on the beach. **NOTICE: Small pebbles, sand, seaweed, and other debris can be sucked into the jet intake and impair or damage the impeller. Always stop the engine and get off the watercraft before beaching it.** [ECJ00491]

EJU36060

## Docking the watercraft

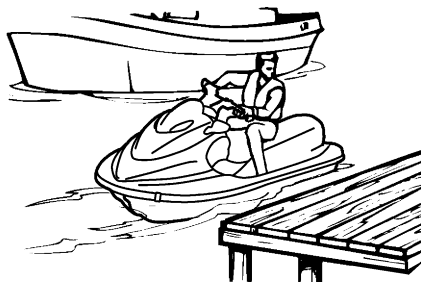
- (1) Make sure that there are no boats, swimmers, or obstacles near the watercraft. Reduce speed about 100 m (330 ft) away from the dock.
- (2) Slowly approach the dock and stop the engine just before coming alongside it.

EJU33321

## Reverse on waterways (for VX Deluxe/VX Cruiser)

Reverse can be used for slow-speed maneuvering when it is necessary to back up out of tight spots where you cannot turn around.

Once the engine is idling, shift into reverse and gradually increase engine speed. Make sure that there are no obstacles or people behind you before shifting into reverse.



EJU37190

## Operating in weeded areas

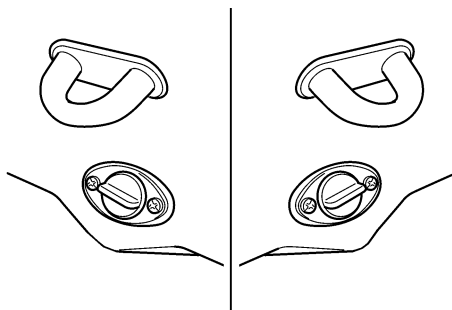
Always avoid operating your watercraft in areas where weed growth is thick. If traveling in weeded areas is unavoidable, operate the engine alternately at partial throttle and full throttle. Weeds tend to accumulate more at a steady speed and at trolling speed. If weeds clog the intake area and cause cavitation, clean the jet intake and impeller. (See page 84 for cleaning procedures.)

EJU33412

## Post-operation care

To keep your watercraft in top shape, always take it out of the water after using it and perform the following procedures. Leaving the watercraft in the water for extended periods will accelerate the rate of normal deterioration of the jet unit components and hull finish. Marine organisms and corrosion are some of the conditions that can adversely affect the life of many watercraft components.

- (1) Remove the watercraft from the water.
- (2) Wash down the hull, handlebars, and jet unit with fresh water.
- (3) Remove the seat and check the engine compartment for water. To drain excess water, remove the stern drain plugs, and then raise the bow of the watercraft enough to allow the water in the bilge to drain out.



### TIP:

This watercraft is equipped with an automatic bilge draining system that removes water from the engine compartment while you are underway. However, some residual water will remain, therefore remove the stern drain plugs to drain the water. (See page 49 for bilge draining procedures.)

- (4) Place the watercraft in a horizontal position.

# Operation

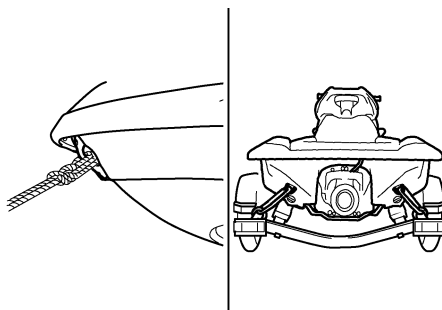
- (5) Flush the cooling system to prevent it from clogging with salt, sand, or dirt. (See page 68 for flushing procedures.)
- (6) If the watercraft will be stored for a week or more, lubricate internal engine components to help prevent corrosion. (See page 69 for lubrication procedures.)
- (7) Rinse the engine and engine compartment with a small amount of water.  
**NOTICE: Do not use high-pressure water when rinsing the engine or engine compartment as severe engine damage could result.** [ECJ00571]
- (8) Wipe the engine and engine compartment dry with a clean cloth (repeat step 3, if necessary).
- (9) Wipe the hull, handlebars, and jet unit dry with a clean cloth.
- (10) Spray a rust inhibitor, such as Yamaha Silicone Protectant and Lubricant, on metallic parts to minimize corrosion.
- (11) Allow the engine compartment to air dry completely before installing the seat.

EJU33452

## Transporting

Before putting the watercraft on a trailer or transporting it, be sure to put the shift lever in the forward position (for VX Deluxe/VX Cruiser). When transporting the watercraft on a trailer, secure the tie downs to the trailer through the bow eye and stern eyes.

**NOTICE: Do not attach ropes or tie downs to any part of the watercraft other than the bow eye and stern eyes to secure the watercraft to the trailer. Otherwise, the watercraft may be damaged. Wrap the ropes or tie downs with towels or rags where they touch the body of the watercraft to avoid scratches or damage. Do not transport the watercraft with the shift lever in the reverse position. Otherwise the reverse gate may hit an obstacle, which could cause damage (for VX Deluxe/VX Cruiser).** [ECJ00622]





EJU33490

## Storage

EWJ00330

### WARNING

**Always place the watercraft upright in a horizontal position when storing it, otherwise fuel could leak out into the engine or engine compartment, which could create a fire hazard.**

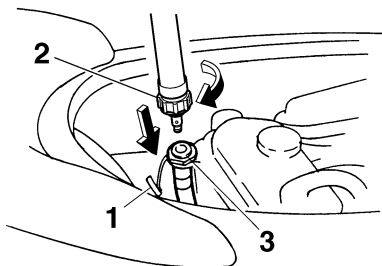
Storage for long periods of time, such as winter storage, requires preventive maintenance to ensure against deterioration. It is advisable to have the watercraft serviced by a Yamaha dealer prior to storage. However, the following procedures can be performed by the owner.

EJU33544

### Flushing the cooling system

Flushing the cooling system is essential to prevent it from clogging with salt, sand, or dirt.

- (1) Place the watercraft in a horizontal position.
- (2) Remove the seat. (See page 29 for seat removal and installation procedures.)
- (3) Remove the flushing hose connector cap, and then insert the garden hose adapter into the flushing hose connector and turn it until it is securely connected.



- 1 Flushing hose connector cap
  - 2 Garden hose adapter
  - 3 Flushing hose connector
- (4) Connect the garden hose adapter to a water tap using a garden hose.

### TIP:

A garden hose is not included.

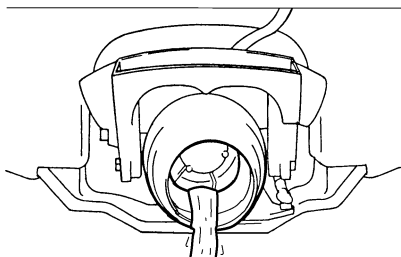
- (5) Start the engine, and then immediately turn the water supply on until water flows out continually from the jet thrust nozzle.

**NOTICE: Do not run the engine for more than 15 seconds without supplying water or over 4000 r/min on land, otherwise the engine could overheat.**

[ECJ01050]

### TIP:

If you will be storing the watercraft for a prolonged period, such as winter storage, top off the fuel tank with fresh gasoline and add fuel stabilizer and conditioner to the fuel tank according to the manufacturer's instruction before starting the engine.



- (6) Run the engine at idling speed for about 3 minutes watching the engine condition. If the engine stops while flushing, turn the water supply off immediately and repeat the above steps. **NOTICE: Do not supply water to the cooling water passages when the engine is not running. The water could flow back through the muffler into the engine, causing severe engine damage.** [ECJ00122]
- (7) Turn the water supply off, and then force the remaining water out of the cooling water passages by alternately squeezing

# Maintenance and care

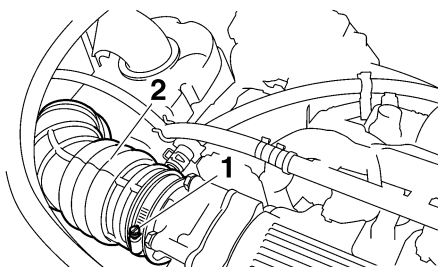
and releasing the throttle lever for 10 to 15 seconds.

- (8) Stop the engine.
- (9) Remove the garden hose adapter and install the flushing hose connector cap.
- (10) Install the seat.

EJU33613

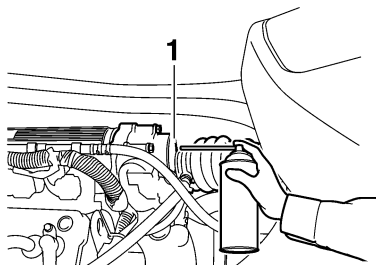
## Lubrication

- (1) Remove the seat. (See page 29 for seat removal and installation procedures.)
- (2) Loosen the clamp screw and disconnect the air intake duct.



- 1 Clamp screw
- 2 Air intake duct

- (3) Spray a rust inhibitor such as Yamaha Stor-Rite Engine Fogging Oil into the intake opening for 3 seconds. **WARNING! Do not spray flammable rust inhibitor products on engine surfaces while the engine is hot. The sprayed substance or propellants could catch fire.** [EJWJ00261]



- 1 Intake opening

- (4) Connect the air intake duct and tighten the clamp screw.
- (5) Start the engine in a well-ventilated area and let it run at idle for 15 seconds. **NOTICE: Do not run the engine for more than 15 seconds without supplying water, otherwise the engine could overheat.** [ECJ00562]
- (6) Lubricate all cables such as the throttle and steering cables. Use a Yamaha Power Cable Luber and Yamaha Lube-Zall to pressure-lubricate the cables and purge out any moisture between the inner and outer cables.
- (7) Lubricate the areas of the watercraft specified in "Lubrication points" on page 77.
- (8) Install the seat.

EJU33681

## Battery

If the watercraft will not be used for more than a month, remove the battery from the watercraft and store it in a cool, dry place.

- (1) Disconnect the negative (–) battery lead first, then the positive (+) battery lead and breather hose, and then remove the battery from the watercraft.
- (2) Clean the battery casing using fresh water.
- (3) If the battery terminals are dirty or corroded, clean them with a wire brush.
- (4) Fully charge the battery.
- (5) Apply Yamaha Marine Grease or Yamaha Grease A to the battery terminals, and then store the battery in a cool, dry place.
- (6) Check the battery at least once every 2 months and fully charge it if necessary. **NOTICE: Always keep the battery charged. Storing a discharged battery can cause permanent battery damage.**

[ECJ00101]

To check the condition of the battery, check the specific gravity of the electrolyte or measure the voltage at both battery terminals. Charge the battery if the voltage is less than 12 volts.

Specific gravity (for reference):  
1.28 at 20 °C (68 °F)

It is recommended to have a Yamaha dealer check the specific gravity and charge the battery. If you maintain the battery yourself, be sure to read and follow the instructions provided with the battery tester and charger you use.

EJU33741

## Cleaning the watercraft

Clean the watercraft before storing it for a long period.

- (1) Wash down the hull, handlebars, and jet unit with fresh water.
  - (2) Rinse the engine and engine compartment with fresh water. Drain all of the water and wipe up any remaining moisture with clean, dry rags. **NOTICE: Do not use high-pressure water when rinsing the engine and engine compartment as severe engine damage could result.**
- [ECJ00111]
- (3) Spray the engine's exterior with a rust inhibitor and lubricant such as Yamaha Silicone Protectant and Lubricant.
  - (4) Wax the hull with a non-abrasive wax such as Yamaha Silicone Wax.
  - (5) Wipe all vinyl and rubber components, such as the seat and engine compartment seals, with a vinyl protectant such as Yamaha Protectant.

EJU33752

## Maintenance and adjustments

Periodic inspection, adjustment, and lubrication will keep your watercraft in the safest and most efficient condition possible. Safety is an obligation of the watercraft owner. Proper maintenance must be carried out to keep the exhaust emission and sound levels within the regulated limits. The most important points of watercraft inspection, adjustment, and lubrication are explained on the following pages. See a Yamaha dealer for genuine Yamaha replacement parts and optional accessories designed for your watercraft.

Remember, failures that are the result of the installation of parts or accessories which are not qualitatively equivalent to genuine Yamaha parts are not covered by the limited warranty.

**Maintenance, replacement, or repair of the emission control devices and system may be performed by any marine SI engine repair establishment or individual. Warranty repair, however, must be performed at an authorized Yamaha marine dealership.**

EWJ00311



**Be sure to turn off the engine when you perform maintenance unless otherwise specified. If you are not familiar with machine servicing, this work should be done by a Yamaha dealer or other qualified mechanic.**

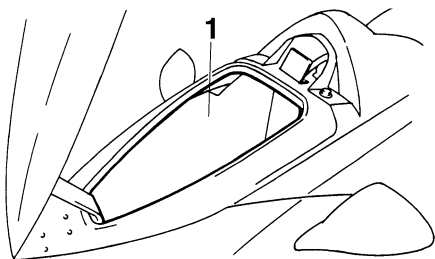
A service manual is available for purchase through a Yamaha dealer for owners who have the mechanical skills, tools, and other equipment necessary to perform maintenance not covered by this owner's/operator's manual.

# Maintenance and care

EJU33801

## Owner's/operator's manual and tool kit

It is advisable to always carry the owner's/operator's manual and tool kit with you whenever you use the watercraft. For your convenience, a storage compartment is provided on the watercraft for the manual and tool kit.

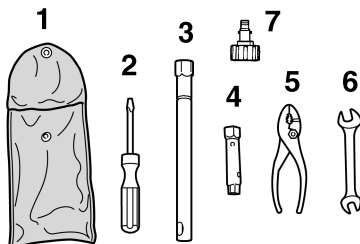


1 Storage compartment

To protect these materials from water damage, it would be a good idea to put them in a waterproof bag. If your owner's/operator's manual is damaged, order a replacement from a Yamaha dealer.

The service information included in this manual is intended to provide you, the owner, with the necessary information for completing your own preventive maintenance and minor repairs. The tools provided in the tool kit are sufficient for this purpose, except that a torque

wrench may also be necessary to tighten nuts and bolts.



- 1 Tool bag
- 2 Screwdriver
- 3 16 mm box wrench
- 4 10/12 mm box wrench
- 5 Pliers
- 6 Open-end wrench
- 7 Garden hose adapter

# Maintenance and care

EJU33821

## Periodic maintenance chart

The following chart gives general guidelines for periodic maintenance. However, maintenance may need to be performed more frequently depending on your operating conditions.

This “●” mark indicates maintenance that you may do yourself.

This “○” mark indicates work to be done by a Yamaha dealer.

| Item                                                       | Operation            | Initial  |          |           | Thereafter every |           | Page |
|------------------------------------------------------------|----------------------|----------|----------|-----------|------------------|-----------|------|
|                                                            |                      | 10 hours | 50 hours | 100 hours | 100 hours        | 200 hours |      |
|                                                            |                      |          | 6 months | 12 months | 12 months        | 24 months |      |
| <b>Spark plugs</b>                                         | Check, clean, adjust | ●/○      |          | ●/○       | ●/○              |           | 76   |
| <b>Lubrication points</b>                                  | Lubricate            |          |          | ●/○       | ●/○              |           | 77   |
| <b>Fuel system</b>                                         | Check                |          |          | ○         | ○                |           | 74   |
| <b>Fuel tank</b>                                           | Check, clean         |          |          | ●/○       | ●/○              |           | 74   |
| <b>Trolling speed</b>                                      | Check, adjust        |          |          | ●/○       | ●/○              |           | 79   |
| <b>Throttle shaft</b>                                      | Check                |          |          | ○         | ○                |           | —    |
| <b>Cooling water passages</b>                              | Flush                | ●*       |          |           |                  |           | 68   |
| <b>Water inlet strainer</b>                                | Check, clean         |          |          | ○         | ○                |           | —    |
| <b>Bilge strainer</b>                                      | Clean                |          |          | ○         | ○                |           | —    |
| <b>Impeller</b>                                            | Check                |          |          | ○         | ○                |           | —    |
| <b>Jet thrust nozzle angle</b>                             | Check, adjust        |          |          | ●/○       | ●/○              |           | 74   |
| <b>Shift cable and reverse gate (VX Deluxe/VX Cruiser)</b> | Check, adjust        |          |          | ●/○       | ●/○              |           | 75   |
| <b>Throttle cable</b>                                      | Check, adjust        | ○        |          | ●/○       | ●/○              |           | 75   |
| <b>Stern drain plugs</b>                                   | Check, replace       |          |          | ○         | ○                |           | 50   |
| <b>Battery</b>                                             | Check, charge        |          |          | ●/○       | ●/○              |           | 78   |
| <b>Rubber coupling</b>                                     | Check                |          |          |           |                  | ○         | —    |
| <b>Engine mount</b>                                        | Check                |          |          |           |                  | ○         | —    |
| <b>Nuts and bolts</b>                                      | Check                | ○        |          | ○         | ○                |           | —    |
| <b>Air filter element</b>                                  | Check                |          |          | ○         | ○                |           | 74   |
| <b>Engine oil</b>                                          | Replace              | ○        |          | ○         | ○                |           | 74   |

# Maintenance and care

| Item            | Operation     | Initial  |          |           | Thereafter every |           | Page |
|-----------------|---------------|----------|----------|-----------|------------------|-----------|------|
|                 |               | 10 hours | 50 hours | 100 hours | 100 hours        | 200 hours |      |
|                 |               |          | 6 months | 12 months | 12 months        | 24 months |      |
| Oil filter      | Replace       |          |          | ○         | ○                |           | 74   |
| Valve clearance | Check, adjust |          |          |           |                  | ○         | —    |

\* This operation should be performed after every use.

EJU34212

## Checking the fuel system

EWJ00381



### WARNING

**Leaking fuel can result in fire or explosion.**

- Check for fuel leakage regularly.
- If any fuel leakage is found, the fuel system must be repaired by a qualified mechanic. Improper repairs can make the watercraft unsafe to operate.

Check the fuel system for leaks, cracks, and malfunctions. If any problem is found, consult a Yamaha dealer.

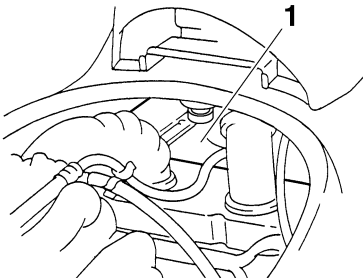
### Check:

- Fuel tank filler cap and seal for damage
- Fuel in fuel tank for water and dirt
- Fuel tank for damage, cracks, and leakage
- Fuel hoses and joints for damage, cracks, and leakage
- Air bleeding passages for leakage

EJU34230

### Fuel tank

Check the fuel tank for leakage and for water in the tank. If water is found in the fuel system, or if the fuel tank needs to be cleaned, have a Yamaha dealer service the watercraft.



1 Fuel tank

EJU34282

## Engine oil and oil filter

EWJ00340



### WARNING

**Engine oil is extremely hot immediately after the engine is turned off. Coming in contact with or getting any engine oil on your clothes could result in burns.**

ECJ00181

### NOTICE

**Do not run the engine with too much or not enough oil in the oil tank, otherwise the engine could be damaged.**

It is recommended to have a Yamaha dealer change the engine oil. However, if you choose to change the oil on your own, refer to the service manual for this watercraft.

Recommended engine oil:

SAE 10W-30, 20W-40, 20W-50

Oil grade:

API SE, SF, SG, SH, SJ, SL

Oil quantity:

With oil filter replacement:

2.2 L (2.33 US qt, 1.94 Imp.qt)

Without oil filter replacement:

2.0 L (2.11 US qt, 1.76 Imp.qt)

Total amount:

4.3 L (4.55 US qt, 3.78 Imp.qt)

EJU34311

### Air filter element

Have a Yamaha dealer check the air filter element at the intervals specified in the periodic maintenance chart.

EJU34321

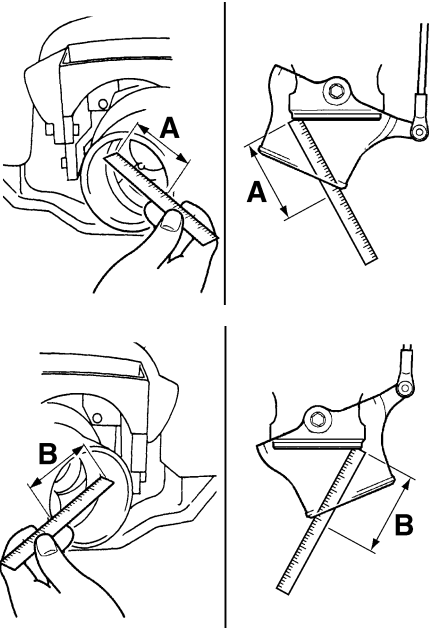
### Checking the jet thrust nozzle angle

Check the handlebars and jet thrust nozzle for smooth operation.

Turn the handlebars as far as possible to the right and left and check that the difference of distances A and B between the jet thrust nozzle and the nozzle is within specification.

# Maintenance and care

Difference of A and B:  
Maximum 5 mm (0.20 in)

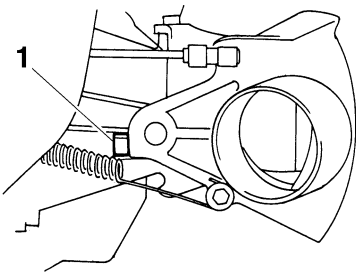


If the steering is stiff or misadjusted, have a Yamaha dealer service it.

EJU34350

## Checking the shift cable (for VX Deluxe/VX Cruiser)

Place the shift lever in the reverse position.  
Make sure that the reverse gate makes contact with the stopper.



1 Stopper

If the reverse gate does not make contact with the stopper, have a Yamaha dealer service it.

EJU36640

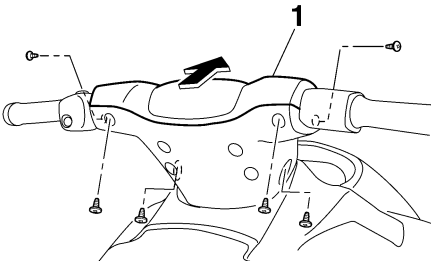
## Checking and adjusting the throttle cable

Check that the throttle cable moves back to the set position smoothly and that the throttle lever free play is within specification.

Squeeze and release the throttle lever. If the throttle lever does not return smoothly, have a Yamaha dealer service it.

If the specified throttle lever free play cannot be obtained as described below, have a Yamaha dealer make the adjustment.

- (1) Remove the six screws, and then remove the front handlebar cover.



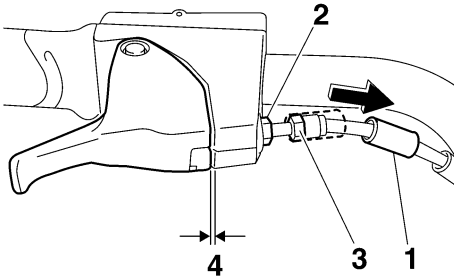
1 Front handlebar cover

- (2) Slide the rubber cover away from the adjuster, and then loosen the locknut.



# Maintenance and care

- (3) Adjust the free play by turning the adjuster.



- 1 Rubber cover
- 2 Locknut
- 3 Adjuster
- 4 Throttle lever free play

Throttle lever free play:  
4.0–7.0 mm (0.16–0.28 in)

- (4) Hold the adjuster with one wrench while tightening the locknut with another wrench. Slide the rubber cover to its original position.
- (5) Install the front handlebar cover, and then install the six screws.

EJU34392

## Cleaning and adjusting the spark plugs

EWJ00350



### WARNING

**Be careful not to damage the insulator when removing or installing a spark plug. A damaged insulator could allow sparks to escape, which could result in a fire or explosion.**

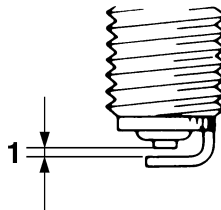
The spark plug is an important engine component and is easy to inspect. The condition of the spark plug can indicate something about the condition of the engine. For example, if one spark plug has a distinctly different color, the engine could require servicing. Do not at-

tempt to diagnose any problems yourself. Have a Yamaha dealer service the watercraft. Remove and inspect the spark plugs periodically; heat and deposits will cause the spark plugs to slowly break down and erode. If electrode erosion becomes excessive, or if carbon and other deposits are excessive, replace the spark plug with the specified plug.

Specified spark plug:  
CR9EB

### To remove a spark plug:

- (1) Remove the seat. (See page 29 for seat removal and installation procedures.)
- (2) Remove the spark plug cap. **NOTICE:** Do not use any tools to remove or install the spark plug cap, otherwise the ignition coil coupler could be damaged. The spark plug cap may be difficult to remove because the rubber seal on the end of the cap fits tightly. To remove the spark plug cap, simply twist it back and forth while pulling it up; to install it, twist it back and forth while pushing it down. [EGJ00211]
- (3) Remove the spark plug. Measure the spark plug gap with a wire thickness gauge. Replace the spark plug or adjust the gap to specification if necessary.



- 1 Spark plug gap

# Maintenance and care

Spark plug gap:  
0.7–0.8 mm (0.028–0.031 in)

## To install a spark plug:

- (1) Clean the gasket surface.
- (2) Wipe any dirt from the threads of the spark plug.
- (3) Install the spark plug, and then tighten it to the specified torque.

Spark plug tightening torque:  
12.5 Nm (1.27 kgf-m, 9.2 ft-lb)

- (4) Wipe off any water on the spark plug or inside the spark plug cap, and then install the cap. Push the spark plug cap down until it is securely installed.

## TIP:

If a torque wrench is not available when you are installing a spark plug, a good estimate of the correct torque is 1/4 turn to 1/2 turn past finger tight using the spark plug wrench included in the tool kit. Have the spark plug adjusted to the correct torque with a torque wrench as soon as possible.

- (5) Install the seat.

EJU34422

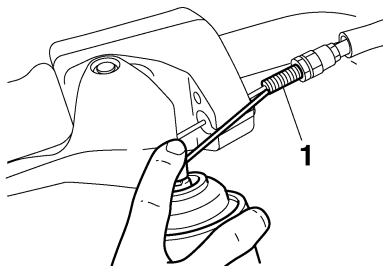
## Lubrication points

To keep moving parts sliding or rotating smoothly, coat them with water-resistant grease.

Recommended water-resistant grease:  
Yamaha Marine Grease/Yamaha  
Grease A

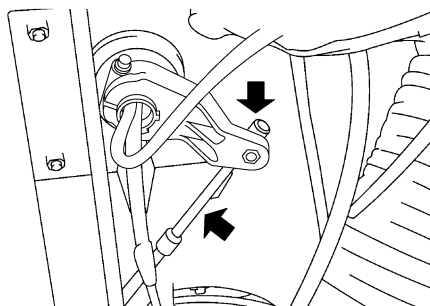
- Throttle cable (handlebar end)  
Loosen the adjuster and disconnect the outer cable from the bracket. Spray a rust inhibitor into the outer cable. Connect the outer cable, and then adjust the throttle ca-

ble free play. (See page 75 for adjustment procedures.)

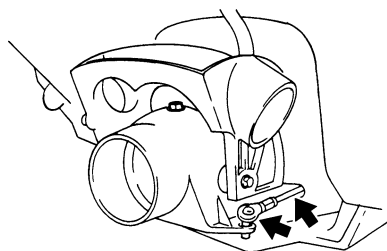


## 1 Adjuster

- Steering cable (handlebar end)

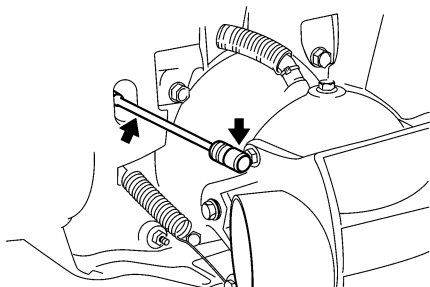


- Steering cable (jet thrust nozzle end)



# Maintenance and care

- For VX Deluxe/VX Cruiser:  
Shift cable (reverse gate end)



EJU34452

## Checking the battery

Check the level of the battery electrolyte and make sure that the negative (–) and positive (+) battery leads are tightened securely.

EWJ00791

## WARNING

**Battery electrolyte is poisonous and dangerous, causing severe burns, etc. Electrolyte contains sulfuric acid. Avoid contact with skin, eyes, or clothing.**

### Antidotes

**External:** Flush with water.

**Internal:** Drink large quantities of water or milk. Follow with milk of magnesia, beaten egg, or vegetable oil. Call a physician immediately.

**Eyes:** Flush with water for 15 minutes and get prompt medical attention.

**Batteries produce explosive gases. Keep sparks, flames, cigarettes, etc., well away. If using or charging the battery in an enclosed space, make sure that it is well ventilated. Always shield your eyes when working near batteries.**

**Keep out of the reach of children.**

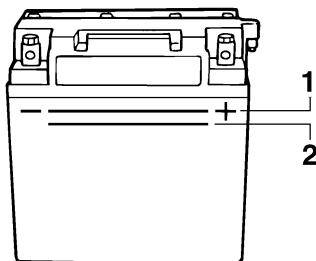
### To remove the battery:

Disconnect the negative (–) battery lead first, then the positive (+) battery lead and breather

hose, and then remove the battery from the watercraft.

### To replenish the battery:

- (1) Make sure that the electrolyte level is between the maximum and minimum level marks.



1 Maximum level mark

2 Minimum level mark

- (2) If the electrolyte level is low, add distilled water to raise it to the specified level.

**NOTICE: Use only distilled water for replenishing the battery, otherwise battery life could be shortened.** [ECJ00241]

### To recharge the battery:

ECJ00250

## NOTICE

**Do not attempt to charge a battery hastily. Battery life could be shortened.**

It is recommended to have a Yamaha dealer charge the battery. If you charge the battery yourself, be sure to read and follow the instructions provided with the battery tester and charger you use.

### To install the battery:

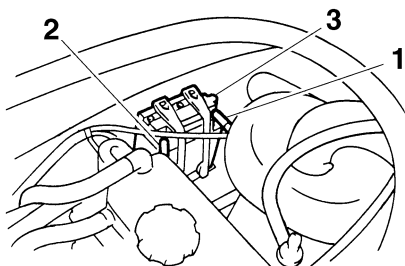
- (1) Place the battery in the battery compartment. Connect the red lead to the positive (+) battery terminal, and then connect the black lead to the negative (–) battery terminal. **NOTICE: Reversal of the battery leads will damage the electrical parts.**

[ECJ00261]

# Maintenance and care

---

- (2) Connect the breather hose to the battery.
- (3) Secure the battery in place. **WARNING!**  
**Fire or explosion could result if the breather hose is damaged, obstructed, or not connected properly.** [EWJ00451]



- 1 Positive (+) battery terminal: Red lead
- 2 Negative (-) battery terminal: Black lead
- 3 Breather hose

EJU34491

## Fuel injection system

If the fuel injection system is malfunctioning, have a Yamaha dealer service the watercraft.

EJU34500

## Checking the trolling speed

- (1) Place the watercraft in the water.
- (2) Start the engine and warm it up. Use the tachometer in the multifunction information center to check the trolling speed.

|                                        |
|----------------------------------------|
| Trolling speed:<br>1650 $\pm$ 50 r/min |
|----------------------------------------|

If the trolling speed is out of specification, have a Yamaha dealer service the watercraft.

EJU34542

## Specifications

### Watercraft capacity:

Maximum people on board:

3 person

Maximum load capacity:

240 kg (530 lb)

### Dimensions:

Length:

VX 3220 mm (126.8 in)

VX Sport 3220 mm (126.8 in)

VX Deluxe 3220 mm (126.8 in)

VX Cruiser 3270 mm (128.7 in)

Width:

1170 mm (46.1 in)

Height:

1150 mm (45.3 in)

Dry weight:

VX 319 kg (703 lb)

VX Sport 319 kg (703 lb)

VX Deluxe 322 kg (710 lb)

VX Cruiser 325 kg (716 lb)

### Performance:

Maximum fuel consumption:

31.0 L/h (8.2 US gal/h, 6.8 Imp.gal/h)

Cruising range at full throttle:

1.94 hour

Trolling speed:

1650 ±50 r/min

### Engine:

Engine type:

Liquid cooled 4-stroke, DOHC

Number of cylinders:

4

Engine displacement:

1052 cm<sup>3</sup>

Bore & stroke:

76.0 × 58.0 mm (2.99 × 2.28 in)

Compression ratio:

11.4 : 1

Valve clearance-intake (cold):

0.11–0.20 mm (0.0043–0.0079 in)

Valve clearance-exhaust (cold):

0.25–0.34 mm (0.0098–0.0134 in)

Lubrication system:

Dry sump

Cooling system:

Water

Starting system:

Electric

Ignition system:

T.C.I.

Spark plug:

CR9EB

Spark plug gap:

0.7–0.8 mm (0.028–0.031 in)

Battery capacity:

12 V, 19.0 Ah

Charging system:

Flywheel magneto

### Drive unit:

Propulsion system:

Jet pump

Jet pump type:

Axial flow, single stage

Impeller rotation:

Counterclockwise

Jet thrust nozzle angle:

24.0+24.0 °

### Fuel and oil:

Recommended fuel:

Regular unleaded gasoline

Minimum octane rating (PON):

86

Minimum octane rating (RON):

90

Recommended engine oil type SAE:

SAE 10W-30, 20W-40, 20W-50

Recommended engine oil grade API:

API SE,SF,SG,SH,SJ,SL

Fuel tank total capacity:

60 L (15.9 US gal, 13.2 Imp.gal)

Engine oil quantity with oil filter replacement:

2.2 L (2.33 US qt, 1.94 Imp.qt)

Engine oil quantity without oil filter replacement:

2.0 L (2.11 US qt, 1.76 Imp.qt)

Engine oil total quantity:

4.3 L (4.55 US qt, 3.78 Imp.qt)

# Trouble recovery

EJU34560

## Troubleshooting

If you have any trouble with your watercraft, use this section to check for the possible cause. If you cannot find the cause, or if the procedure for replacement or repair is not described in this owner's/operator's manual, have a Yamaha dealer perform the necessary service.

EJU34593

### Troubleshooting chart

| TROUBLE                                                         | POSSIBLE CAUSE                                |                             | REMEDY                         | PAGE |
|-----------------------------------------------------------------|-----------------------------------------------|-----------------------------|--------------------------------|------|
| <b>Engine does not start (Starter motor does not turn over)</b> | Yamaha Security System (VX Deluxe/VX Cruiser) | Lock mode selected          | Select unlock mode             | 35   |
|                                                                 | Engine shut-off switch                        | Clip not in place           | Install clip                   | 31   |
|                                                                 | Fuse                                          | Burned out                  | Replace fuse and check wiring  | 85   |
|                                                                 | Battery                                       | Run down                    | Recharge                       | 78   |
|                                                                 |                                               | Poor terminal connections   | Tighten as required            | 78   |
|                                                                 |                                               | Terminal corroded           | Clean                          | 69   |
|                                                                 | Starter motor                                 | Faulty                      | Have serviced by Yamaha dealer | —    |
| <b>Engine does not start (Starter motor turns over)</b>         | Throttle lever                                | Squeezed                    | Release                        | 32   |
|                                                                 | Fuel                                          | Empty                       | Refill as soon as possible     | 44   |
|                                                                 |                                               | Stale or contaminated       | Have serviced by Yamaha dealer | 74   |
|                                                                 | Fuel tank                                     | Water or dirt present       | Have serviced by Yamaha dealer | 74   |
|                                                                 | Spark plug                                    | Fouled or defective         | Clean or replace               | 76   |
|                                                                 | Spark plug cap                                | Not connected or loose      | Connect properly               | 76   |
|                                                                 |                                               | Connected to wrong cylinder | Connect properly               | 76   |
|                                                                 | Fuel injection system                         | Fuel pump faulty            | Have serviced by Yamaha dealer | —    |

# Trouble recovery

| TROUBLE                           | POSSIBLE CAUSE        |                             | REMEDY                         | PAGE |
|-----------------------------------|-----------------------|-----------------------------|--------------------------------|------|
| Engine runs irregularly or stalls | Fuel                  | Empty                       | Refill as soon as possible     | 44   |
|                                   |                       | Stale or contaminated       | Have serviced by Yamaha dealer | 74   |
|                                   | Fuel tank             | Water or dirt present       | Have serviced by Yamaha dealer | 74   |
|                                   | Spark plug            | Fouled or defective         | Replace                        | 76   |
|                                   |                       | Incorrect heat range        | Replace                        | 76   |
|                                   |                       | Gap incorrect               | Adjust                         | 76   |
|                                   | Spark plug cap        | Loose                       | Connect properly               | 76   |
|                                   |                       | Cracked, torn, or damaged   | Have serviced by Yamaha dealer | —    |
|                                   | Electrical wiring     | Loose connection            | Have serviced by Yamaha dealer | —    |
| Warning light or indicator blinks | Fuel injection system | Faulty or clogged injectors | Have serviced by Yamaha dealer | —    |
|                                   | Fuel level            | Empty                       | Refill as soon as possible     | 44   |
|                                   | Oil pressure warning  | Oil pressure dropped        | Have serviced by Yamaha dealer | 39   |
|                                   | Engine overheated     | Jet intake clogged          | Clean                          | 84   |
|                                   | Check engine warning  | Faulty sensors              | Have serviced by Yamaha dealer | 40   |

# Trouble recovery

| TROUBLE                        | POSSIBLE CAUSE                                |                                          | REMEDY                           | PAGE |
|--------------------------------|-----------------------------------------------|------------------------------------------|----------------------------------|------|
| Watercraft slow or loses power | Yamaha Security System (VX Deluxe/VX Cruiser) | Low-RPM mode selected                    | Select normal mode               | 36   |
|                                | Cavitation                                    | Jet intake clogged                       | Clean                            | 84   |
|                                |                                               | Impeller damaged or worn                 | Have serviced by Yamaha dealer   | 84   |
|                                | Engine over-heat warning                      | Engine speed reduction control activated | Clean jet intake and cool engine | 40   |
|                                | Oil pressure warning                          | Engine speed reduction control activated | Add oil                          | 39   |
|                                | Spark plug                                    | Fouled or defective                      | Replace                          | 76   |
|                                |                                               | Incorrect heat range                     | Replace                          | 76   |
|                                |                                               | Gap incorrect                            | Adjust                           | 76   |
|                                | Spark plug caps                               | Loose                                    | Connect properly                 | 76   |
|                                | Electrical wiring                             | Loose connection                         | Have serviced by Yamaha dealer   | —    |
|                                | Fuel                                          | Stale or contaminated                    | Have serviced by Yamaha dealer   | 74   |
|                                | Air filter                                    | Clogged or oil buildup                   | Have serviced by Yamaha dealer   | 74   |



EJU34620

## Emergency procedures

EJU34631

### Cleaning the jet intake and impeller

EWJ00780

#### **WARNING**

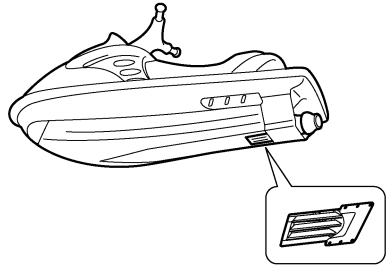
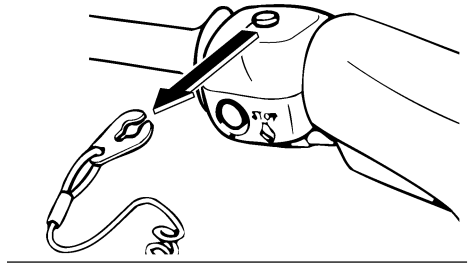
Before attempting to remove weeds or debris from the jet intake or impeller area, shut the engine off and remove the clip from the engine shut-off switch. Severe injury or death could result from coming in contact with the rotating parts of the jet pump.

If weeds or debris gets caught in the jet intake or impeller, cavitation can occur, causing jet thrust to decrease even though engine speed rises. If this condition is allowed to continue, the engine will overheat and may seize.

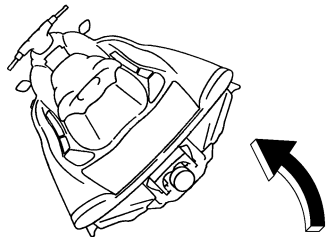
**NOTICE:** If weeds or debris gets caught in the jet intake, do not operate the watercraft above trolling speed until they have been removed. [ECJ00651]

If there is any sign that the jet intake or impeller is clogged with weeds or debris, return to shore and check the intake and impeller. Al-

ways stop the engine before beaching the watercraft.



- (1) Place a suitable clean cloth or carpeting underneath the watercraft to protect it from abrasions and scratches. Turn the watercraft on its side as shown. **NOTICE:** Always turn the watercraft over onto its port (left) side. When turning the watercraft on its side, support the bow so that the handlebars are not bent or damaged. [ECJ00661]



# Trouble recovery

- (2) Remove any weeds or debris from around the jet intake, drive shaft, impeller, jet pump housing, and jet thrust nozzle.

If debris is difficult to remove, consult a Yamaha dealer.

EJU34641

## Jumping the battery

If the watercraft battery has run down, the engine can be started using a 12-volt booster battery and jumper cables.

EJU34662

## Connecting the jumper cables

EWJ01250



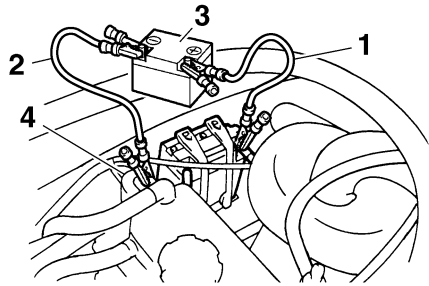
### WARNING

To avoid battery explosion and serious damage to the electrical system:

- Do not reverse the polarity of the jumper cables when connecting to the batteries.
- Do not connect the negative (–) jumper cable to the negative (–) terminal of the watercraft battery.
- Do not touch the positive (+) jumper cable to the negative (–) jumper cable.

- (1) Connect the positive (+) jumper cable to the positive (+) battery terminals of both batteries.
- (2) Connect one end of the negative (–) jumper cable to the negative (–) battery terminal of the booster battery.

- (3) Connect the other end of the negative (–) jumper cable to an engine hanger.



- 1 Positive (+) jumper cable
- 2 Negative (–) jumper cable
- 3 Booster battery
- 4 Engine hanger

- (4) Start the engine, and then disconnect the jumper cables by reversing the steps above. **NOTICE:** Never push the start switch while the engine is running. Do not operate the start switch for more than 5 seconds, otherwise the battery will be discharged and the engine will not start. Also, the starter motor could be damaged. If the engine does not start in 5 seconds, release the start switch, wait 15 seconds, and then try again. [ECJ00481]

EJU34691

## Replacing the fuses

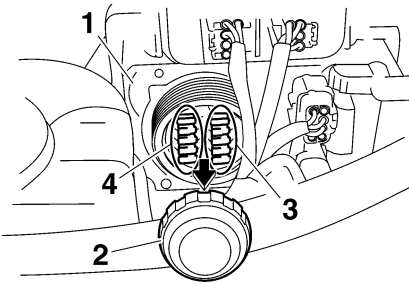
The fuses are located in the electrical box.

To replace a fuse:

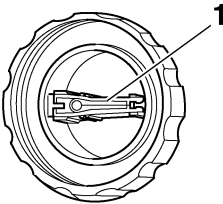
- (1) Remove the cap on the electrical box.
  - (2) Replace the blown fuse with the spare fuse of the correct amperage by using the fuse puller on the reverse side of the cap.
- WARNING! Do not use fuses of higher amperage than recommended. Substitution with a fuse that has an improper rating can cause extensive electrical**

## system damage and possible fire.

[EWJ00801]



- 1 Electrical box
- 2 Cap
- 3 Fuse
- 4 Spare fuse



- 1 Fuse puller

### Fuse amperage:

Battery fuse:

30 A

Main relay drive fuse:

10 A

Electronic throttle valve fuse:

10 A

Security system fuse:

3 A

Main fuse:

20 A

EJU34711

## Towing the watercraft

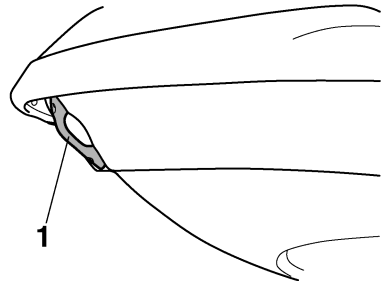
EWJ00811

### **WARNING**

- The operator of the towing boat must keep speed to a minimum and avoid traffic or obstacles which could be a hazard to the operator on the watercraft.
- The towline should be long enough so that the watercraft will not collide with the towing boat when slowing down.

If the watercraft becomes inoperative in the water, it can be towed to shore.

When the watercraft is towed using a towline, the operator should hold onto the handlebars and ride the watercraft in order to balance it. Use a towline that is three times the combined length of the towing boat and the watercraft.



- 1 Bow eye

Tow the watercraft at 5 mph (8 km/h) or less. The bow must be kept up out of the water during towing to prevent water from entering the engine compartment.

EJU36151

## Submerged watercraft

If the watercraft is submerged or flooded with water, follow the procedure below and consult a Yamaha dealer as soon as possible. Failure to do so could result in serious engine damage.

- (1) Beach the watercraft and remove the stern drain plugs to drain the water from

# Trouble recovery

---

the engine compartment. (See page 49 for more information.)

Remove the storage compartment drain plugs to drain the water from the storage compartments.

- (2) Install the stern drain plugs and storage compartment drain plugs.
- (3) Have the watercraft inspected by a Yamaha dealer as soon as possible.

**NOTICE: Be sure to have a Yamaha dealer inspect the watercraft. Otherwise, serious engine damage could result.** [ECJ00791]

## Limited warranty

### YAMAHA MOTOR CORPORATION, U.S.A. WATERCRAFT LIMITED WARRANTY

Yamaha Motor Corporation is proud of its heritage and reputation for producing products with high standards of quality and workmanship. Product excellence provides the cornerstone for our commitment to customer satisfaction. The Yamaha Watercraft Limited Warranty is your assurance of this commitment.

This warranty provides you with protection against the expense of repairs for your watercraft that are required as a result of defects in materials or workmanship. When maintained and utilized in the prescribed manner, you can count on your Yamaha watercraft to provide reliable service.

This warranty provides you with specific coverage and notes your responsibilities in maintaining and operating your watercraft. Please take the time to read and become familiar with this warranty.

**PERIOD OF WARRANTY.** Any new Yamaha watercraft purchased for pleasure use from an authorized Yamaha dealer in the United States, will be warranted against defects in material or workmanship for a period of one (1) year from date of purchase, subject to exclusions noted herein. Any Yamaha Watercraft purchased and utilized for commercial applications will be warranted for a period of ninety [90] days from the date of purchase, subject to exclusions noted herein. Replacement parts used in warranty repairs will be warranted for the balance of the applicable warranty period.

The warranty described here applies to watercrafts purchased and registered for use in the United States only. For warranty provisions outside the United States, contact the particular country's local Yamaha distributor.

**OBTAINING REPAIRS UNDER WARRANTY.** During the period of warranty, any authorized Yamaha dealer will, free of charge, repair or replace, at Yamaha's option, any parts adjudged defective by Yamaha due to faulty workmanship or material from the factory. All parts replaced under warranty will become the property of Yamaha Motor Corporation, U.S.A.

**CUSTOMER'S RESPONSIBILITY.** Under the terms of this warranty, the customer will be responsible for ensuring that the watercraft is properly operated, maintained, and stored as specified in the applicable Owner's/Operator's Manual.

The owner of the watercraft shall give notice to an authorized Yamaha dealer of any and all apparent defects within ten [10] days of discovery and make the watercraft available at that time for inspection and repairs at the dealer's place of business.

**GENERAL EXCLUSIONS FROM WARRANTY.** This warranty will not cover the repair of damage if the damage is a result of abuse or neglect of the product. Examples of abuse and neglect include, but are not limited to:

1. Racing or competition use, modification of original parts abnormal strain.
2. Lack of proper maintenance and off season storage as described in the Owner's/Operator's Manual, installation of parts or accessories that are not equivalent in design and quality to genuine Yamaha parts.
3. Use of lubricants, oils, and fuel/oil mixtures that are not suitable for watercraft motor use.
4. Damage as a result of accidents, collisions, contact with foreign materials, or submersion.
5. Growth of marine organisms on motor or hull surfaces.
6. Normal deterioration.
7. Gel coat stress cracks.

#### **SPECIFIC PARTS EXCLUDED FROM WARRANTY.**

Parts replaced due to normal wear or routine maintenance such as oil, spark plugs, fuel filters, impeller and liner, and anodes are not covered by warranty. Charges for transporting the watercraft to and from an authorized Yamaha dealer are excluded from warranty coverage.

**TRANSFER OF WARRANTY.** Transfer of the warranty from the original purchaser to any subsequent purchaser is possible by having the watercraft inspected by an authorized Yamaha dealer and requesting the dealer to submit a change of registration to Yamaha Motor Corporation, U.S.A. within ten [10] days of the transfer.

**YAMAHA MOTOR CORPORATION, U.S.A. MAKES NO OTHER WARRANTY OF ANY KIND, EXPRESSED OR IMPLIED. ALL IMPLIED WARRANTIES OF MERCHANTABILITY AND FITNESS FOR A PARTICULAR PURPOSE WHICH EXCEED THE OBLIGATIONS AND TIME LIMITS STATED IN THIS WARRANTY ARE HEREBY DISCLAIMED BY YAMAHA MOTOR CORPORATION, U.S.A. AND EXCLUDED FROM THIS WARRANTY.**

**SOME STATES DO NOT ALLOW LIMITATIONS ON HOW LONG AN IMPLIED WARRANTY LASTS, SO THE ABOVE LIMITATION MAY NOT APPLY TO YOU. ALSO EXCLUDED FROM THIS WARRANTY ARE ANY INCIDENTAL OR CONSEQUENTIAL DAMAGES INCLUDING LOSS OF USE. SOME STATES DO NOT ALLOW THE EXCLUSION OR LIMITATION OF INCIDENTAL OR CONSEQUENTIAL DAMAGES, SO THE ABOVE EXCLUSION MAY NOT APPLY TO YOU.**

# Consumer information

---

**THIS WARRANTY GIVES YOU SPECIFIC LEGAL RIGHTS, AND YOU MAY ALSO HAVE OTHER RIGHTS WHICH VARY FROM STATE TO STATE.**

**YAMAHA MOTOR CORPORATION, U.S.A.**  
Post Office Box 6555  
Cypress, California 90630

## WARRANTY QUESTIONS AND ANSWERS

- Q. What costs are my responsibility during the warranty period?
- A. The customer's responsibility includes all costs of normal maintenance services, non-warranty repairs, accident and collision damages.
- Q. What are some examples of "abnormal" strain, neglect, or abuse?
- A. These terms are general and overlap each other in areas. Specific examples include:  
Running the watercraft out of oil, operating the machine with a broken or damaged part which causes another part to fail, and so on. If you have any specific questions on operation or maintenance, please contact your Yamaha dealer for advice.
- Q. Does the warranty cover incidental costs such as transportation due to a failure?
- A. No. The warranty is limited to repair of the watercraft itself.
- Q. May I perform any or all of the recommended maintenance shown in the Owner's/Operator's Manual instead of having the dealer do them?
- A. Yes, if you are a qualified mechanic and follow the procedures specified in the Owner's/Operator's and Service Manual. We do recommend, however, that items requiring special or equipment be done by a Yamaha dealer.
- Q. Will the warranty be void or cancelled if I do not operate or maintain my new watercraft exactly as specified in the Owner's/Operator's Manual?
- A. No. The warranty on a new watercraft cannot be "voided" or "cancelled". **However, if a particular failure is caused by operation or maintenance other than as shown in the Owner's/Operator's Manual, that failure may not be covered under warranty.**
- Q. What responsibility does my dealer have under this warranty?
- A. Each Yamaha dealer is expected to:
1. Completely set up each new watercraft before sale.
  2. Explain the operation, maintenance, and warranty requirements to your satisfaction at the time of sale, and upon your request at any later date. In addition, each Yamaha dealer is held responsible for his setup, service and warranty repair work.
- Q. Is the warranty transferable to second owners?
- A. Yes. The remainder of the existing warranty can be transferred upon request. The unit has to be inspected and re-registered by an authorized Yamaha dealer for the policy to remain effective.

## CUSTOMER SERVICE

If your watercraft requires warranty service, you must take it to any authorized Yamaha dealer within the continental United States. Be sure to bring your warranty registration card or other valid proof of the original date of purchase. If a question or problem arises regarding warranty, first contact the owner of the dealership. Since all warranty matters are handled at the dealer level, this person is in the best position to help you. If you are still not satisfied and require additional assistance, please write:

YAMAHA MOTOR CORPORATION U.S.A.  
CUSTOMER RELATIONS DEPARTMENT  
P.O. Box 6555  
Cypress, California 90630

## CHANGE OF ADDRESS

The federal government requires each manufacturer to maintain a complete, up-to-date list of all first purchasers against the possibility of a safety-related defect and recall. This list is compiled from the purchase registrations sent to Yamaha Motor Corporation, U.S.A. by the selling dealer at the time of your purchase.

If you should move after you have purchased your new watercraft, please advise us of your new address by sending a postcard listing your Yamaha model name, engine number, dealer number [or dealer's name] as it is shown on your warranty card, your name and new mailing address.

Mail to:

YAMAHA MOTOR CORPORATION, U.S.A.  
P.O. Box 6555  
Cypress, California 90630  
Attention: Warranty Department

This will ensure that Yamaha Motor Corporation, U.S.A. has an up-to-date registration record in accordance with federal law.

EJU34800

## YAMAHA EXTENDED SERVICE (Y.E.S.)

Keep your Yamaha protected even after your warranty expires with genuine Yamaha Extended Service (Y.E.S.).

- Y.E.S. is designed and administered by Yamaha Motor Corporation to provide maximum owner satisfaction. You get uninterrupted factory-backed coverage for extra peace of mind.
- Y.E.S. is flexible. You choose the plan that is right for you: 12 months, 24 months, 36 months, or (on four-stroke models) 48 months beyond your warranty period.
- Y.E.S. is designed and administered by the same Yamaha people who handle your warranty—and it shows in the comprehensive coverage benefits. There are no mileage limitations. Coverage is not limited to “moving parts” or the “drive train” like many other plans. And Y.E.S. covers manufacturing defects just like the warranty. See the sample contract at your Yamaha dealer to see how comforting uninterrupted factory-backed protection can be.
- You do not have to pay anything for covered repairs. There is no deductible to pay, and repairs are not “pro-rated.” You do not have any “out-of-pocket” expenses for covered repairs.
- In addition, Travel and Recreation Interruption Protection (TRIP) is included at no extra cost. TRIP gives you up to \$150 reimbursement per occurrence for any reasonable expenses you incur because your Yamaha needs covered service: replacement vehicle rental, emergency towing, phone calls, even food and lodging when you are away from home. This superb coverage goes into effect when you purchase Y.E.S., so it applies to any warranty repairs as well as covered repairs during your entire Y.E.S. plan period.
- Y.E.S. coverage is honored at any authorized Yamaha dealer nationwide.
- Y.E.S. coverage is transferable to a new owner if you sell or trade-in. That can make your Yamaha much more valuable!

This excellent Y.E.S. plan coverage is only available to Yamaha owners like you, and only while your Yamaha is still within the Yamaha Limited Warranty period. So visit your authorized Yamaha dealer to get all the facts. He can show you how easy it is to protect your investment with Yamaha Extended Service.

We urge you to act now. You will get the excellent benefits of TRIP coverage right away, and you will rest easy knowing you will have strong factory-backed protection even after your Yamaha Limited Warranty expires.

A special note:

If visiting your dealer is not convenient, contact Yamaha with your Primary ID number (your Owner's Manual shows you where to find this number). We will be happy to help you get the Y.E.S. coverage you need.

Yamaha Service Marketing  
P.O. Box 6555  
Cypress, CA 90630  
1-(866)-YES-EXTD  
(1-866-937-3983)



**YAMAHA EXTENDED SERVICE**

# Index

---

|                                                         |    |                                                                |
|---------------------------------------------------------|----|----------------------------------------------------------------|
| <b>A</b>                                                |    |                                                                |
| Air filter element .....                                | 74 | Fuel level..... 48                                             |
| Approval label of emission control<br>certificate ..... | 2  | Fuel level meter..... 38                                       |
| <b>B</b>                                                |    | Fuel level warning indicator..... 39                           |
| Battery..... 50, 69                                     |    | Fuel system, checking..... 74                                  |
| Battery, checking..... 78                               |    | Fuel tank .....                                                |
| Battery, jumping .....                                  | 85 | Fuel tank filler cap .....                                     |
| Beaching the watercraft .....                           | 65 | Fuses, replacing..... 85                                       |
| Bilge .....                                             | 49 | <b>G</b>                                                       |
| Boarding alone .....                                    | 60 | Getting to know your watercraft .....                          |
| Boarding and starting from a dock .....                 | 59 | Glove compartment..... 42                                      |
| Boarding and starting in deep water .....               | 59 | <b>H</b>                                                       |
| Boarding and starting in shallow water ....             | 59 | Handgrip..... 34                                               |
| Boarding with passengers..... 60                        |    | Hazard information..... 15                                     |
| Bow eye .....                                           | 34 | Hood..... 29                                                   |
| <b>C</b>                                                |    | Hour meter/voltmeter .....                                     |
| Capsized watercraft .....                               | 62 | Hull and deck .....                                            |
| Check engine warning indicator .....                    | 40 | Hull Identification Number (HIN)..... 1                        |
| Cleaning the watercraft .....                           | 70 | <b>I</b>                                                       |
| Cooling water pilot outlet..... 32, 53                  |    | Identification numbers .....                                   |
| Cruising limitations .....                              | 10 | <b>J</b>                                                       |
| <b>D</b>                                                |    | Jet intake .....                                               |
| Docking the watercraft .....                            | 65 | Jet intake and impeller, cleaning..... 84                      |
| <b>E</b>                                                |    | Jet thrust nozzle angle, checking .....                        |
| Emergency procedures..... 84                            |    | Jumper cables, connecting .....                                |
| Emission control information..... 2                     |    | <b>L</b>                                                       |
| Engine break-in .....                                   | 54 | Labels, important..... 4                                       |
| Engine compartment .....                                | 48 | Labels, other .....                                            |
| Engine oil .....                                        | 45 | Labels, warning .....                                          |
| Engine oil and oil filter..... 74                       |    | Launching the watercraft..... 54                               |
| Engine oil level .....                                  | 48 | Learning to operate your watercraft .....                      |
| Engine overheat warning indicator..... 40               |    | Leaving the watercraft .....                                   |
| Engine serial number .....                              | 1  | Limitations on who may operate the<br>watercraft .....         |
| Engine shut-off cord (lanyard)..... 52                  |    | Limited warranty .....                                         |
| Engine shut-off switch .....                            | 31 | “L-MODE” indicator light<br>(for VX Deluxe/VX Cruiser)..... 41 |
| Engine stop switch .....                                | 31 | Lubrication..... 69                                            |
| Enjoy your watercraft responsibly .....                 | 23 | Lubrication points .....                                       |
| <b>F</b>                                                |    | <b>M</b>                                                       |
| Fire extinguisher..... 50                               |    | Main components, location of .....                             |
| Flushing the cooling system..... 68                     |    | Maintenance and adjustments .....                              |
| Front storage compartment..... 42                       |    | Manufactured date label..... 2                                 |
| Fuel .....                                              | 44 | Multifunction information center .....                         |
| Fuel and oil..... 44                                    |    | <b>O</b>                                                       |
| Fuel injection system..... 79                           |    | Oil pressure warning indicator..... 39                         |



|                                                                 |        |                                                                    |        |
|-----------------------------------------------------------------|--------|--------------------------------------------------------------------|--------|
| Operating in weeded areas .....                                 | 66     | Stopping the watercraft .....                                      | 64     |
| Operating your watercraft.....                                  | 57     | Storage.....                                                       | 68     |
| Operation .....                                                 | 54     | Storage compartments .....                                         | 41     |
| Operation of controls and other<br>functions .....              | 29     | Submerged watercraft .....                                         | 86     |
| Operation requirements .....                                    | 12     | Switches .....                                                     | 52     |
| Owner's/operator's manual and tool kit....                      | 71     | <b>T</b>                                                           |        |
| <b>P</b>                                                        |        | Tachometer .....                                                   | 38     |
| Periodic maintenance chart.....                                 | 72     | Throttle cable, checking and adjusting .....                       | 75     |
| Post-operation care.....                                        | 66     | Throttle lever .....                                               | 32, 51 |
| Pre-operation check list.....                                   | 46     | To get more boating safety information....                         | 22     |
| Pre-operation check points .....                                | 48     | Towing the watercraft.....                                         | 86     |
| Pre-operation checks .....                                      | 46     | Transporting .....                                                 | 67     |
| Primary Identification (PRI-ID) number .....                    | 1      | Trolling speed, checking .....                                     | 79     |
| <b>R</b>                                                        |        | Troubleshooting .....                                              | 81     |
| Reboarding step (for VX Cruiser).....                           | 34     | Troubleshooting chart .....                                        | 81     |
| Recommended equipment.....                                      | 14     | Turning the watercraft .....                                       | 63     |
| Remote control transmitter<br>(for VX Deluxe/VX Cruiser).....   | 30     | <b>W</b>                                                           |        |
| Reverse on waterways<br>(for VX Deluxe/VX Cruiser).....         | 65     | Water separator .....                                              | 49     |
| Riding with passengers .....                                    | 58     | Watercraft characteristics.....                                    | 15     |
| Rules of the Road .....                                         | 18     | Water-skiing .....                                                 | 17     |
| <b>S</b>                                                        |        | <b>Y</b>                                                           |        |
| Seat.....                                                       | 29     | Yamaha Engine Management System<br>(YEMS) .....                    | 35     |
| "SECURITY" indicator light<br>(for VX Deluxe/VX Cruiser).....   | 41     | <b>YAMAHA EXTENDED SERVICE</b><br>(Y.E.S.) .....                   | 90     |
| Selecting the operation mode<br>(for VX Deluxe/VX Cruiser)..... | 36     | Yamaha Security System<br>(for VX Deluxe/VX Cruiser).....          | 35     |
| Shift cable, checking<br>(for VX Deluxe/VX Cruiser).....        | 75     | Yamaha Security System settings<br>(for VX Deluxe/VX Cruiser)..... | 35     |
| Shift lever and reverse gate<br>(for VX Deluxe/VX Cruiser)..... | 51     |                                                                    |        |
| Shift lever (for VX Deluxe/VX Cruiser) .....                    | 33     |                                                                    |        |
| Shifting (for VX Deluxe/VX Cruiser) .....                       | 56     |                                                                    |        |
| Spark plugs, cleaning and adjusting .....                       | 76     |                                                                    |        |
| Speedometer.....                                                | 38     |                                                                    |        |
| Star labels .....                                               | 2      |                                                                    |        |
| Start switch.....                                               | 32     |                                                                    |        |
| Starting the engine .....                                       | 54     |                                                                    |        |
| Starting the watercraft.....                                    | 58     |                                                                    |        |
| Steering system .....                                           | 33, 51 |                                                                    |        |
| Stern drain plugs .....                                         | 50     |                                                                    |        |
| Stern eyes .....                                                | 34     |                                                                    |        |
| Stopping the engine .....                                       | 55     |                                                                    |        |







Printed in USA  
July 2008-1.4 × 1 CR